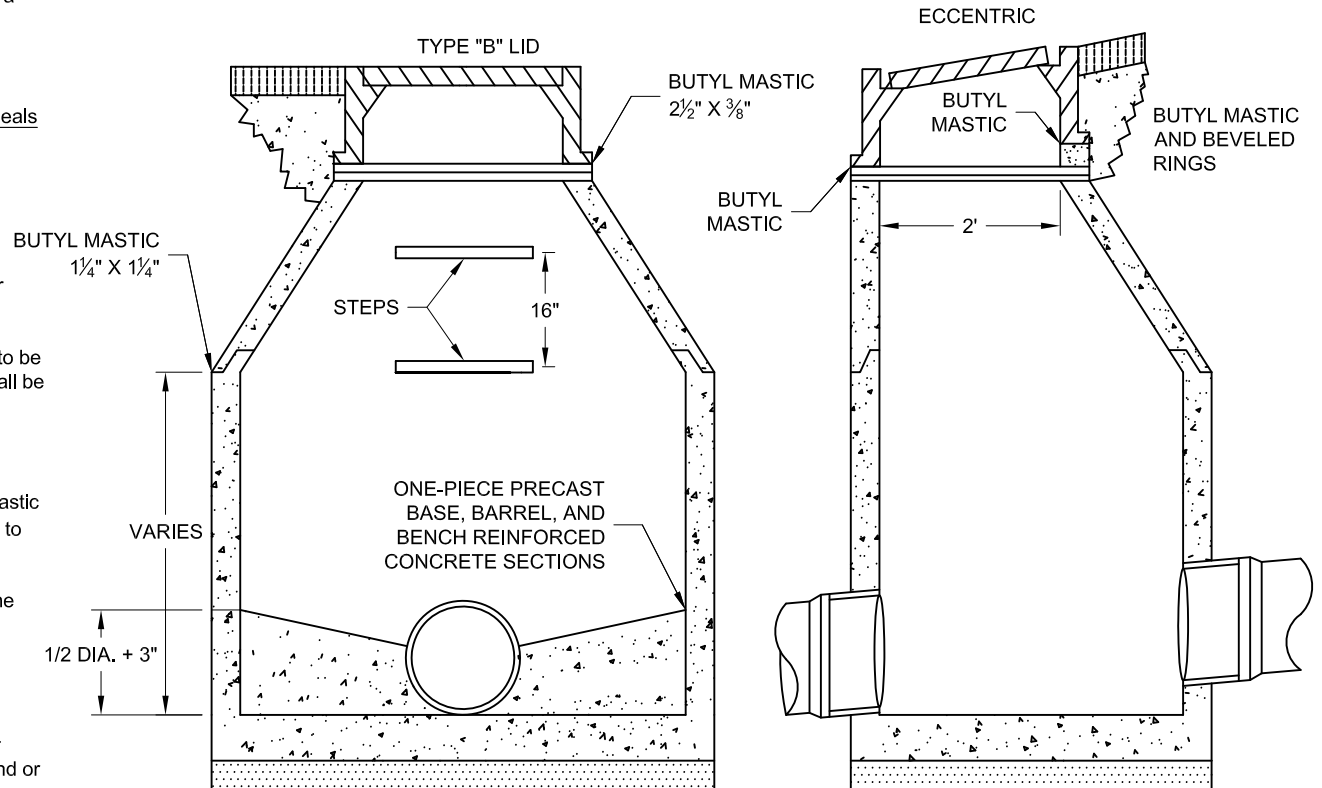


SANITARY MANHOLE

NOTES:

1. Sanitary Manhole castings
 - A. In paved and parkway areas Neenah R-1772-C (380 lbs.) with a solid lid.
 - B. In backlot areas Neenah R-1772-B (325 lbs.).
2. All frames and lids must have concealed pick holes and gasketed self-sealing features. "O" ring seals are not permitted. Flat gaskets "T" seals are required, and frame must accommodate chimney seal.
3. All lids must be stamped "Sanitary Manhole".
4. Manholes to have one piece integral base and barrel section.
5. Manholes to be 4' diameter for sewers 18" or less, and 5' diameter for sewers larger than 18" and less than 48".
6. Manholes 4' in diameter which exceed a depth of 4' shall have steps to be coated with polypropylene plastic, "Press Fit" type installation. Steps shall be 16" apart on center.
7. All Manholes to have chimney seal collars.
8. All joints between barrel sections shall be sealed with flexible butyl mastic material 1 1/4" wide by 1/4" thick. All joints between riser rings and frames to be sealed with flexible butyl mastic material 2 1/2" wide 3/8" thick.
9. External or internal chimney seals must be installed between the dome and frame.
10. All connections to be by preinstalled synthetic rubber sleeve with stainless steel clamps, non shear-type.
11. When shimming to grade is required in paved areas, beveled rubber adjustment rings and butyl mastic shall be used. No shimming of any kind or mortar layers are allowed.
13. The maximum amount of adjustment for frame elevation is 8" with 2 concrete or rubber riser rings. Beveled riser rings shall be used in cases where a difference in elevation exists. Metal riser rings are not allowed and bricks shall not be used for shimming the frame on the structure.
14. When an eccentric cone is used:
 - A. If the Manhole is of 4' dia. then the cone shall be of 2'-6" in height.
 - B. If the Manhole is of 5' dia. then the cone shall be of 3'-9" in height.



CITY OF WHEATON	
DESIGN DETAILS AND STANDARDS	
FIGURE # 16	
DATE: 03-15-16	FILE NAME: Sanitary Manhole.dwg