

RESOLUTION NO. R-2021-87

**A RESOLUTION APPROVING A
PLAT OF VACATION AND GRANT OF EASEMENT FOR PUBLIC UTILITIES
(Wyndemere)**

WHEREAS, the Wheaton IL Senior Property, LLC has presented a plat of vacation and grant of easement for a public utility easement located in the Wyndemere Development near 200 Wyndemere Circle to the City for approval (the property is legally described in Exhibit A, attached to this resolution); and the Wheaton City staff has recommended that the easement vacation be approved.

NOW, THEREFORE, BE IT RESOLVED by the Mayor and City Council of the City of Wheaton, Illinois, that the Plat of Vacation and Grant of Easement, prepared by Gabriela Ptasinska, an Illinois professional land surveyor, dated September 3, 2021, is hereby approved, and the Mayor is hereby authorized to sign, and the City Clerk is authorized and directed to attest, to this resolution and the Plat of Vacation and Grant of Easement incorporated herein as Exhibit B.

ADOPTED this 4th day of October, 2021.



Mayor

ATTEST:



City Clerk

City Clerk

Ayes: Roll Call Vote
Councilwoman Bray-Parker
Councilman Brown
Mayor Suess
Councilwoman Fitch
Councilwoman Robbins
Councilman Weller
Councilman Barbier

Nays: None

Absent: None

Motion Carried Unanimously

EXHIBIT A

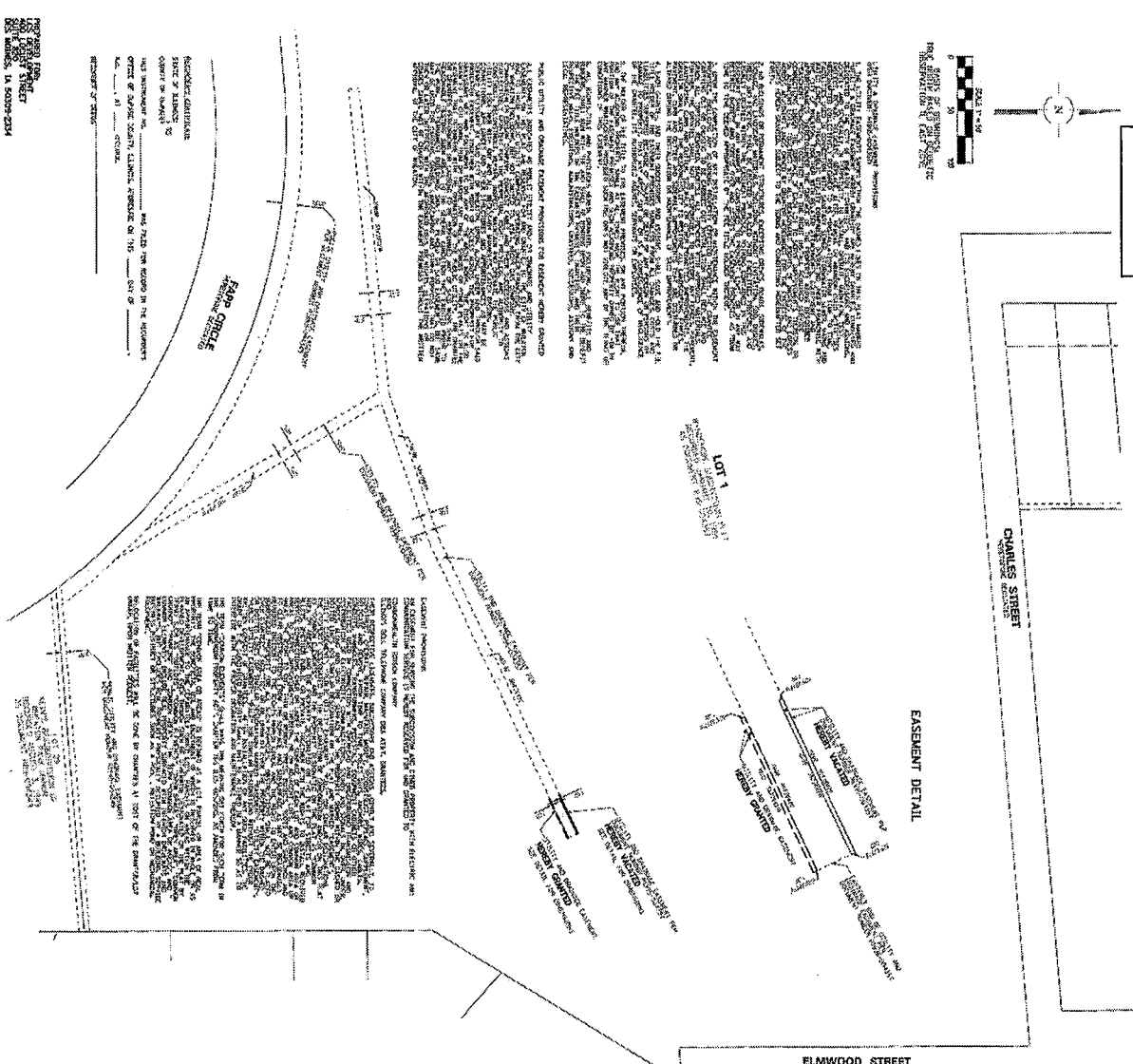
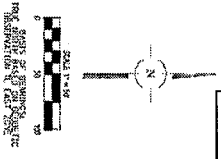
Legal Description

PROPERTY DESCRIPTION OF OVERALL AFFECTED AREA:

LOT 1 IN WYNDEMERE SUBDIVISION PLAT, BEING A SUBDIVISION OF LOTS 31 AND 34 IN KEIM'S RESUBDIVISION OF WHEATON PARK MANOR, BEING A SUBDIVISION OF PART OF SECTION 18, TOWNSHIP 39 NORTH, RANGE 10, EAST OF THE THIRD PRINCIPAL MERIDIAN, ACCORDING TO THE PLAT OF SAID WYNDEMERE SUBDIVISION PLAT RECORDED JANUARY 10, 1995 AS DOCUMENT R95-004357, IN DUPAGE COUNTY ILLINOIS

P.I.N: 05-18-439-033

EXHIBIT B



PLAT OF VACATION AND GRANT OF EASEMENT

PLAT 05-18-09-03

FOR THE VACATION OF CERTAIN INTERESTS AND THE GRANT OF EASEMENTS IN AND TO CERTAIN LOTS OF LAND IN THE CITY OF WASHINGTON, DISTRICT OF COLUMBIA, AS SHOWN ON THE ATTACHED MAP, THE FOLLOWING IS THE DESCRIPTION OF THE SAME:

CITY OF WASHINGTON
 DISTRICT OF COLUMBIA
 COUNTY OF DISTRICT

CITY OF WASHINGTON
 DISTRICT OF COLUMBIA
 COUNTY OF DISTRICT

CITY OF WASHINGTON
 DISTRICT OF COLUMBIA
 COUNTY OF DISTRICT

CITY OF WASHINGTON
 DISTRICT OF COLUMBIA
 COUNTY OF DISTRICT

CITY OF WASHINGTON
 DISTRICT OF COLUMBIA
 COUNTY OF DISTRICT

CITY OF WASHINGTON
 DISTRICT OF COLUMBIA
 COUNTY OF DISTRICT

CITY OF WASHINGTON
 DISTRICT OF COLUMBIA
 COUNTY OF DISTRICT

CITY OF WASHINGTON
 DISTRICT OF COLUMBIA
 COUNTY OF DISTRICT

CITY OF WASHINGTON
 DISTRICT OF COLUMBIA
 COUNTY OF DISTRICT

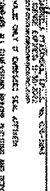
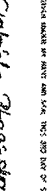
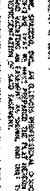
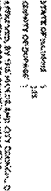
CITY OF WASHINGTON
 DISTRICT OF COLUMBIA
 COUNTY OF DISTRICT

CITY OF WASHINGTON
 DISTRICT OF COLUMBIA
 COUNTY OF DISTRICT

CITY OF WASHINGTON
 DISTRICT OF COLUMBIA
 COUNTY OF DISTRICT

CITY OF WASHINGTON
 DISTRICT OF COLUMBIA
 COUNTY OF DISTRICT

CITY OF WASHINGTON
 DISTRICT OF COLUMBIA
 COUNTY OF DISTRICT



REGISTERED PROFESSIONAL ENGINEERS
REGISTERED PROFESSIONAL ENGINEERS
REGISTERED PROFESSIONAL ENGINEERS
REGISTERED PROFESSIONAL ENGINEERS
REGISTERED PROFESSIONAL ENGINEERS



REGISTERED PROFESSIONAL ENGINEERS
REGISTERED PROFESSIONAL ENGINEERS
REGISTERED PROFESSIONAL ENGINEERS
REGISTERED PROFESSIONAL ENGINEERS
REGISTERED PROFESSIONAL ENGINEERS

