

RESOLUTION R-20-14

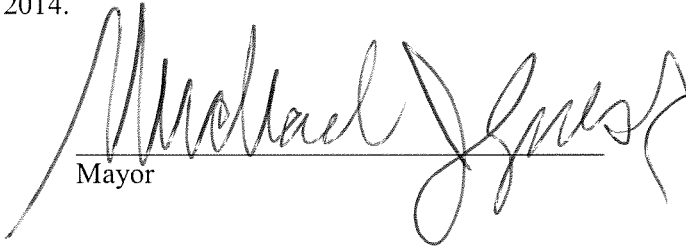
**A RESOLUTION APPROVING
WHEATON COLLEGE IRVING AND HARRISON
PLAT OF CONSOLIDATION**

WHEREAS, Wheaton College, as owner, has submitted a plat of consolidation of the properties located at 821 and 825 Irving Avenue and at 530 East Harrison Avenue to the City for approval (the property is described on Exhibit "A" attached to this resolution); and the Wheaton City staff has recommended that the plat of consolidation be approved.

NOW, THEREFORE, BE IT RESOLVED by the Mayor and City Council of the City of Wheaton, Illinois that the plat of Wheaton College Irving and Harrison Plat of Consolidation, as prepared by Daniel Sytsma, an Illinois Professional Land Surveyor, dated January 22, 2014 is hereby approved.

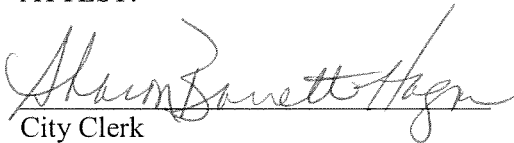
IT IS FURTHER RESOLVED that the Mayor is authorized to sign the approval form, and the City Clerk is authorized and directed to attest to the signature of the Mayor and attach a certified copy of this resolution of approval to the plat of Wheaton College Irving and Harrison Plat of Consolidation.

ADOPTED this 21st day of April, 2014.



Mayor

ATTEST:



City Clerk

Roll Call Vote

| | |
|---------|---|
| Ayes: | Councilman Suess Councilman Prendiville Councilman Rutledge Councilman Saline Mayor Gresk Councilwoman Pacino Sanguinetti Councilman Scalzo |
| Nays: | None |
| Absent: | None |

Motion Carried Unanimously

EXHIBIT "A"

Wheaton College Irving and Harrison Plat of Consolidation
821 & 825 Irving Avenue and 530 East Harrison Avenue
Wheaton, IL 60187

Legal Description

PARCEL 1: LOT 1 IN WHEATON CHRISTIAN GRAMMAR SCHOOL'S SECOND PLAT OF CONSOLIDATION, BEING A SUBDIVISION OF PART OF THE NORTH ½ OF SECTION 16, TOWNSHIP 39 NORTH, RANGE 10, EAST OF THE THIRD PRINCIPAL MERIDIAN, ACCORDING TO SAID WHEATON CHRISTIAN GRAMMAR SCHOOL'S SECOND PLAT OF CONSOLIDATION, RECORDED SEPTEMBER 7, 1993 AS DOCUMENT R93-200560, IN DUPAGE COUNTY, ILLINOIS.

PARCEL 2: THE SOUTH 62.9 FEET OF THE NORTH 79.4 FEET OF LOT 19 IN COUNTY CLERK'S ASSESSMENT DIVISION IN THE NORTH ½ OF THE NORTHEAST ¼ OF SECTION 16, TOWNSHIP 39 NORTH, RANGE 10, EAST OF THE THIRD PRINCIPAL MERIDIAN, IN DUPAGE COUNTY, ILLINOIS.

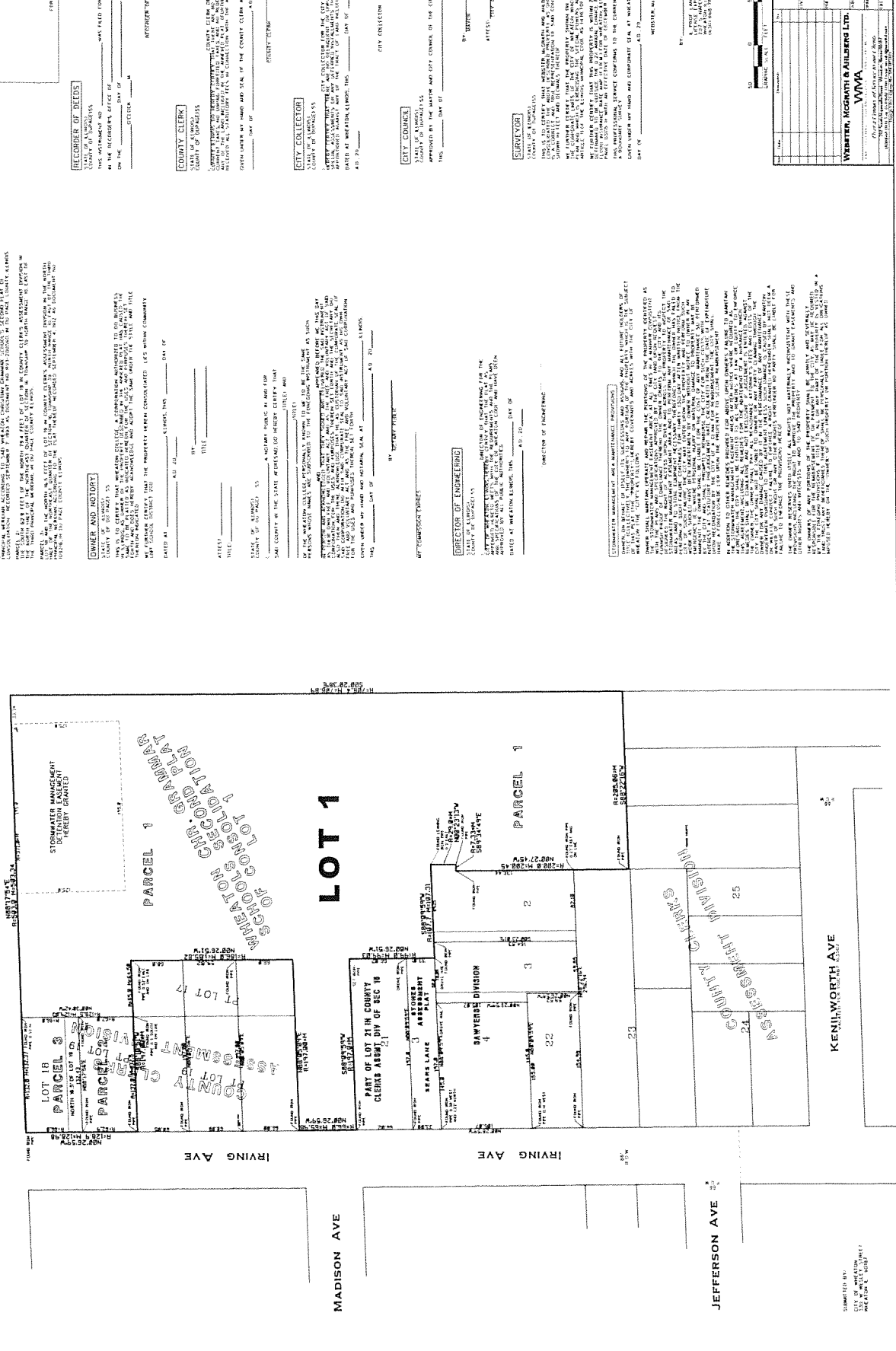
PARCEL 3: LOT 18 AND THE NORTH 16.5 FEET OF LOT 19 IN COUNTY CLERK'S ASSESSMENT DIVISION IN THE NORTH ½ OF THE NORTHEAST ¼ OF SECTION 16, TOWNSHIP 39 NORTH, RANGE 10, EAST OF THE THIRD PRINCIPAL MERIDIAN, ACCORDING TO THE PLAT THEREOF RECORDED SEPTEMBER 4, 1912 AS DOCUMENT 109216, IN DUPAGE COUNTY, ILLINOIS.

P.I.N.: 05-16-204-067; -002; -001

PLAT NO. 204-001
 05-16-2014-002
 05-16-2014-001

AREA OF CONSOLIDATION
 231,877 SQUARE FEET - 5.3232 ACRES

WHEATON COLLEGE IRVING AND HARRISON
 PLAT OF CONSOLIDATION



FOR RECORDERS USE

RECORDED OF RECORDS
 STATE OF ILLINOIS
 IN THE RECORDER'S OFFICE OF _____ COUNTY CLERKS ABSTRACT DIVISION
 ON THE _____ DAY OF _____ A.D. 2014

COUNTY CLERK
 COUNTY OF ILLINOIS

CITY COLLECTOR
 COUNTY OF ILLINOIS

CITY COUNCIL
 COUNTY OF ILLINOIS

CITY CLERK
 COUNTY OF ILLINOIS

DIRECTOR OF ENGINEERING
 COUNTY OF ILLINOIS

DIRECTOR OF ENGINEERING
 COUNTY OF ILLINOIS

DIRECTOR OF ENGINEERING
 COUNTY OF ILLINOIS

DIRECTOR OF ENGINEERING
 COUNTY OF ILLINOIS

DIRECTOR OF ENGINEERING
 COUNTY OF ILLINOIS

DIRECTOR OF ENGINEERING
 COUNTY OF ILLINOIS

DIRECTOR OF ENGINEERING
 COUNTY OF ILLINOIS

DIRECTOR OF ENGINEERING
 COUNTY OF ILLINOIS

DIRECTOR OF ENGINEERING
 COUNTY OF ILLINOIS

DIRECTOR OF ENGINEERING
 COUNTY OF ILLINOIS

DIRECTOR OF ENGINEERING
 COUNTY OF ILLINOIS

DIRECTOR OF ENGINEERING
 COUNTY OF ILLINOIS

DIRECTOR OF ENGINEERING
 COUNTY OF ILLINOIS

DIRECTOR OF ENGINEERING
 COUNTY OF ILLINOIS

DIRECTOR OF ENGINEERING
 COUNTY OF ILLINOIS

DIRECTOR OF ENGINEERING
 COUNTY OF ILLINOIS

DIRECTOR OF ENGINEERING
 COUNTY OF ILLINOIS

DIRECTOR OF ENGINEERING
 COUNTY OF ILLINOIS

DIRECTOR OF ENGINEERING
 COUNTY OF ILLINOIS

DIRECTOR OF ENGINEERING
 COUNTY OF ILLINOIS

DIRECTOR OF ENGINEERING
 COUNTY OF ILLINOIS

PLAT OF CONSOLIDATION
 NORTHWEST CORNER OF
 WHEATON COLLEGE CAMPUS
 WHEATON, ILLINOIS

WHEATON, MCGRAW-HILL & AULBERG LTD.
 WMA

STATE OF ILLINOIS
 COUNTY OF ILLINOIS
 CITY OF WHEATON

