

RESOLUTION R-28-12

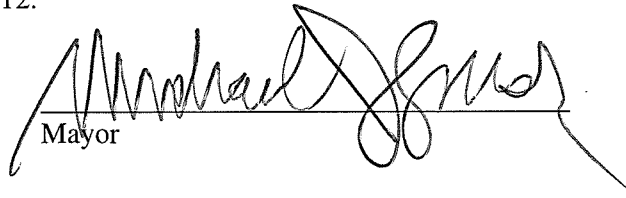
**A RESOLUTION APPROVING THE PLAT OF
COLLEGE STATION OF WHEATON RESUBDIVISION
(Blanchard Street and Avery Avenue)**

WHEREAS, the owner has presented a plat of resubdivision of the property located at northeast corner of Blanchard Street and Avery Avenue to the City for approval (the property is legally described in Exhibit A, attached to this resolution); and the Wheaton City staff has recommended that the plat of vacation be approved.

NOW, THEREFORE, BE IT RESOLVED by the Mayor and City Council of the City of Wheaton, Illinois, that the Plat of College Station of Wheaton Resubdivision, prepared by C. Brian Lounsbury, an Illinois professional land surveyor, dated March 21, 2012, is hereby approved.

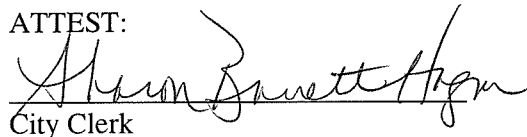
IT IS FURTHER RESOLVED that the Mayor is authorized to sign the approval form and the City Clerk is authorized and directed to attest to the signature of the Mayor and attach a certified copy of this resolution of approval to the Plat of Resubdivision.

ADOPTED this 16th day of April, 2012.



Mayor

ATTEST:



City Clerk

Roll Call Vote

Ayes:	Councilman Rutledge Mayor Gresk Councilwoman Pacino Sanguinetti Councilman Scalzo Councilman Sues Councilwoman Ives Councilman Mouhelis
Nays:	None
Absent:	None

Motion Carried Unanimously

Exhibit A

College Station of Wheaton Resubdivision
NE Corner Blanchard Street & Avery Avenue

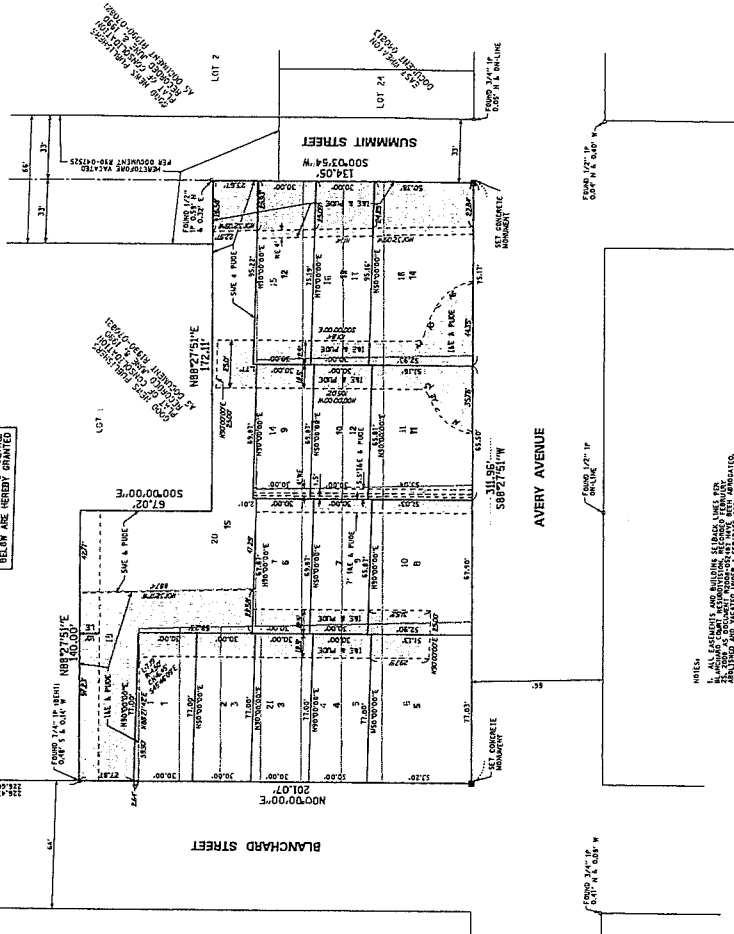
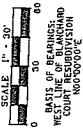
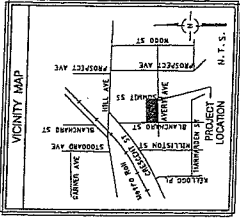
Legal Description

LOTS 1 THROUGH 21 IN BLANCHARD COURT RESUBDIVISION, BEING A RESUBDIVISION OF PART OF SECTION 15, TOWNSHIP 39 NORTH, RANGE 10 EAST OF THE THIRD PRINCIPAL MERIDIAN, ACCORDING TO THE PLAT THEREOF RECORDED FEBRUARY 29, 2008 AS DOCUMENT R2008-032487, IN DUPAGE COUNTY, ILLINOIS.

P.I.N.: 05-15-119-055 thru 05-15-119-075

COLLEGE STATION OF WHEATON RESUBDIVISION

RESUBDIVISION OF PART OF SECTION 15, TOWNSHIP 33 NORTH, RANGE 10 EAST OF THE THIRD PRINCIPAL MERIDIAN, IN DUPAGE COUNTY, ILLINOIS.



ALL EASEMENTS PER DETAIL
BELOW ARE HEREBY GRANTED

LOT	AREA (SQ. FT.)	AREA (ACRES)
1	32,345.20	0.740
2	31,100.00	0.713
3	31,100.00	0.713
4	31,100.00	0.713
5	31,100.00	0.713
6	31,100.00	0.713
7	31,100.00	0.713
8	31,100.00	0.713
9	31,100.00	0.713
10	31,100.00	0.713
11	31,100.00	0.713
12	31,100.00	0.713
13	31,100.00	0.713
14	31,100.00	0.713
15	31,100.00	0.713
16	31,100.00	0.713
17	31,100.00	0.713
18	31,100.00	0.713
TOTAL	561,175.20	12.815

NO.	ARC LENGTH	RADIUS	CHORD BEARING	CHORD LENGTH
1	24.15'	24.15'	S10°30'00"W	24.15'
2	24.15'	24.15'	S10°30'00"W	24.15'
3	24.15'	24.15'	S10°30'00"W	24.15'
4	24.15'	24.15'	S10°30'00"W	24.15'
5	24.15'	24.15'	S10°30'00"W	24.15'
6	24.15'	24.15'	S10°30'00"W	24.15'
7	24.15'	24.15'	S10°30'00"W	24.15'
8	24.15'	24.15'	S10°30'00"W	24.15'
9	24.15'	24.15'	S10°30'00"W	24.15'
10	24.15'	24.15'	S10°30'00"W	24.15'
11	24.15'	24.15'	S10°30'00"W	24.15'
12	24.15'	24.15'	S10°30'00"W	24.15'
13	24.15'	24.15'	S10°30'00"W	24.15'
14	24.15'	24.15'	S10°30'00"W	24.15'
15	24.15'	24.15'	S10°30'00"W	24.15'
16	24.15'	24.15'	S10°30'00"W	24.15'
17	24.15'	24.15'	S10°30'00"W	24.15'
18	24.15'	24.15'	S10°30'00"W	24.15'
TOTAL	434.70'			434.70'

NOTES:
1. ALL EASEMENTS AND BUILDING FOOTPRINTS ARE SHOWN PER THE PLAT AND SHALL BE CONSIDERED PART OF THIS RESUBDIVISION. ALL EASEMENTS SHALL BE AS SHOWN AND SHALL NOT BE SUBJECT TO CHANGE.
2. THIS RESUBDIVISION SHALL BE SUBJECT TO THE PROVISIONS OF THE 1990 ILLINOIS SUBDIVISION ACT.
3. THE RESUBDIVISION SHALL BE SUBJECT TO THE PROVISIONS OF THE 1990 ILLINOIS SUBDIVISION ACT.
4. THE RESUBDIVISION SHALL BE SUBJECT TO THE PROVISIONS OF THE 1990 ILLINOIS SUBDIVISION ACT.

- UT = UTILITY AND LOWESS EASEMENT
- PE = PUBLIC UTILITY AND SERVICE EASEMENT
- SE = SIDEWALK EASEMENT
- DE = DRIVEWAY EASEMENT
- WE = WATER SERVICE EASEMENT
- ME = ME & POLE EASEMENT

PROVISIONS:
07/12/2012
07/12/2012
02/27/2012

ENGINEERS:
DATE: 07/12/2012
JOB NO.: 1476
PROJECT NO.: 1476
SHEET NO.: 1 OF 2

CONSTRUCTIVE ENGINEERS:
DATE: 07/12/2012
JOB NO.: 1476
PROJECT NO.: 1476
SHEET NO.: 1 OF 2

REGISTERED PROFESSIONAL ENGINEERS:
DATE: 07/12/2012
JOB NO.: 1476
PROJECT NO.: 1476
SHEET NO.: 1 OF 2

REGISTERED PROFESSIONAL ENGINEERS:
DATE: 07/12/2012
JOB NO.: 1476
PROJECT NO.: 1476
SHEET NO.: 1 OF 2

1925 W. Ogden Road, Suite 700, Naperville, Illinois 60563
Phone: (630) 444-0000 Fax: (630) 444-0005

SPACECO INC.

FOR REVIEW
PURPOSES ONLY

PREPARED FOR:
SPACECO INC.
520 EAST ROOSEVELT ROAD
WEST CHICAGO, ILLINOIS 60659