

**LED LIGHTING INSTALLATION**  
**GENERAL INSTRUCTIONS REGARDING THE SOLICITATION OF CONTRACTED SERVICES**

Solicitations are open to all business firms actively engaged in providing the materials, equipment, and services specified and inferred. Active engagement will be verified via references.

1) SOLICITATION PROCESS

a) Documents:

- i) The City of Wheaton's website, [www.wheaton.il.us/bids/](http://www.wheaton.il.us/bids/) is the official source for all documents related to this solicitation. The City is not responsible for documents distributed by any other source.
- ii) It is the responsibility of the Bidder to seek clarification of any requirement that may not be clear. This includes a review of all solicitation documents.
- iii) All questions concerning this solicitation shall be submitted via e-mail to the attention of the Procurement Officer by the last date for questions as reflected on the cover page of this document. A written response in the form of a public addendum will be published on the City's website, [www.wheaton.il.us/bids/](http://www.wheaton.il.us/bids/).
- iv) Any interpretation, correction or change of the solicitation documents will be made by published Addendum. Interpretations, corrections, and changes to the solicitation documents made in any other manner will not be binding. All addenda will be published on the City's website at <http://www.wheaton.il.us/bids/>. It is up to the Bidder to check this site for the most current addendum.
- v) Bidders shall acknowledge the receipt of any addendum.

b) The Cone of Silence:

- i) The Cone of Silence is designed to protect the integrity of the procurement process by shielding it from undue influences.
- ii) During the period beginning with the issuance of the solicitation document through the execution of the award document, bidders are prohibited from all communications regarding this solicitation with City staff, City consultants, City legal counsel, City agents, or elected officials.
- iii) Any attempt by a bidder to influence a member or members of the aforementioned may be grounds to disqualify the bidder from participation in this solicitation.

c) Exceptions to the Cone of Silence:

- i) Written communications directed to the Procurement Officer
- ii) All communications occurring at pre-bid meetings
- iii) Oral presentations during finalist interviews, negotiation proceedings, or site visits
- iv) Oral presentations before publicly noticed committee meetings
- v) Contractors already on contract with the City to perform services for the City are allowed discussions necessary for the completion of an existing contract.
- vi) Procurement of goods or services for Emergency situations

2) INVESTIGATION

- a) It shall be the responsibility of the Bidder to make any and all investigations necessary to become thoroughly informed of what is required and specified in the solicitation.
  - i) If the site of the work is an area restricted from the general public, a pre-bid meeting will be provided for all potential bidders to perform this inspection.
  - ii) If the site of the work is an area open to the general public, the potential bidder may perform their inspection at a time of their choosing.
- b) Bidder shall inspect in detail the site of the proposed work and familiarize himself with all the local conditions affecting the work and the detailed requirements of delivery, installation, or construction.
- c) No plea of ignorance by the bidder of conditions that exist or that may hereafter exist, because of failure or omission on the part of the bidder to make the necessary examinations and investigations, will be accepted as a basis for varying the requirements of the City or the compensation to the bidder.

3) OFFERS

- a) Exceptions to specifications, requirements, Terms and Conditions must be clearly identified.

- b) Offers including goods or equipment must include: Manufacturer's warranties and/or guarantees
  - c) Offers including service during the warranty/guarantee period must include, in writing, any restrictions, and/or associated costs.
  - d) QUOTES are to be submitted via fax or e-mail. Verbal offers will not be accepted.
  - e) FORMAL OFFERS must be on the forms provided and compiled in the order stated. Do not use binders, folders, tabs, or papers larger than 8.5 x 11.
  - f) Delivery of an offer is acceptance of the City's requirements. Offers containing terms and conditions contrary to those specified, or taking exception to any of the Special Terms and Conditions, General Terms and Conditions, Specifications, or Addenda as stated by the City may be considered non-responsive.
  - g) The City shall not accept an offer which is based upon any other offer, contract, or reference to any other document or numbers not included in the solicitation documents.
- 4) ORDER OF PRECEDENCE
- a) Wherever requirements are in conflict, the order of precedence shall be as follows: City Contract, City Specifications, City Special Terms, and Conditions; City General Terms and Conditions.
  - b) City requirements take precedence over Bidder's offer.
- 5) SIGNATURES AS OFFER
- a) Under the conditions of the Uniform Commercial Code, the signing of the submittal by the bidder constitutes an offer. If accepted by the City, the offer becomes part of the contract.
  - b) Offers by:
    - i) Individuals or sole proprietorships shall be signed by a person with the authority to enter into legal binding contracts. Said individual shall use his usual signature.
    - ii) Partnerships shall be signed with partnership name by one of the members of the partnership, or an authorized representative, followed by the signature and title of the person signing.
    - iii) By corporations shall be signed with the name of the corporation, followed by the signature and title of person authorized to bind it in the matter.
- 6) WITHDRAWAL OF OFFERS
- a) Offers may be withdrawn at any time prior to the scheduled opening or due date. Requests to withdraw an offer shall be in writing, properly signed, and received by the Procurement Officer prior to the due date.
  - b) Offers may not be withdrawn after the due date without the approval of the Procurement Officer.
  - c) Negligence in preparing an offer confers no right of withdrawal after opening / due date.
- 7) TIMEFRAME AND CONSEQUENCES
- a) Offers must be received before the designated time.
  - b) Offers received after the designated time will be returned to the sender without review. Offers received late that may be attributed to delays by overnight delivery services, or by delivery services trying to deliver when offices are closed, will be considered late and returned to the sender.
  - c) Unless otherwise specified in the solicitation, offers shall be binding for ninety (90) calendar days following due date.
- 8) PUBLIC OPENINGS
- a) Formal offers by sealed envelope will be publicly opened at the time and location stated. The Procurement Officer shall read the name of the bidder, offered price, and note if deviations are stated. After the opening an apparent low bid will be announced. Award will be based on analysis of costs, deviations, city budget, and approval by City Council.
  - b) Results of Openings will be published on the City's website [www.wheaton.il.us/bids/](http://www.wheaton.il.us/bids/) within three business days.
  - c) Bidders are encouraged to attend all openings and to offer constructive suggestions for improvements to the solicitation process, to increase competition, and ways in which the City may achieve greater savings and increased transparency.
  - d) Despite the reading of offers at a public opening, if the offers are thence rejected and thus subject to rebid, the read results will not be published and will be exempt from FOIA requests.

9) REQUIREMENTS

a) Brand Names or Equal:

- i) Specifications are prepared to describe the goods and services which the City deems to be in its best interests to meet its performance requirements. These specifications shall be considered the minimum standards expected of the contractor.
- ii) If an offer does not indicate deviations or alternatives to the specifications, the City shall assume the offer is fully compliant with all specifications.
- iii) Specifications are not intended to exclude potential contractors. Any reference in the City's specifications to a brand name, manufacturer, trade name, catalog number or the like is descriptive, not restrictive, indicating materials that are satisfactory.
- iv) Consideration of other makes and models will be considered, provided the bidder submits a request for pre-approval by the Last Date for Questions stated on the cover page. Bidder should state exactly what he proposes and attach a cut sheet, illustration or other descriptive matter which will clearly indicate the character of the item. A written response in the form of a public addendum will be published on the City's website, [www.wheaton.il.us/bids/](http://www.wheaton.il.us/bids/).

b) Quantities:

- i) All quantities represent an estimate of the quantity of the work to be done and/or materials to be ordered. It is given as a basis for comparison of offers and to determine the awarding of the contract.
- ii) The City does not expressly or by implication agree that the actual quantities involved will correspond to the published estimate. The bidder accepts that the quantities stated are estimates only and will not hold the City bound to said number.
- iii) The City reserves the right to modify the estimates, or remove them in their entirety, whichever is in the best interests of the City.

10) BID BONDS

- a) The City may require a Bid Bond / Bid Deposit if so stated.
- b) Bid Bonds / Bid Deposits are typically ten percent (10%) of the full contract price unless depicted otherwise.
- c) If a Bid Deposit (preferred), it shall be submitted with the formal offer and be in the form of a certified check or a bank cashier's check made payable to the City of Wheaton. Checks will be retained by the City until an award is fully executed, at which time the checks will be promptly returned to the unsuccessful Bidders.
  - i) The Bid Deposit check of the successful Bidder will be retained until the contract has been executed and all required documents, including a Performance Bond if requested, are received.
  - ii) The Bid Deposit check of the successful Bidder shall be forfeited to the City if the Bidder withdraws its offer, or neglects, refuses or is unable to enter into a contract.
- d) If Bidder chooses to use a Bid Bond, the Bid Bond must be in compliance with all bond requirements mandated by the State of Illinois.

11) DEVIATIONS TO REQUIREMENTS AND ALTERNATE OFFERS

- a) If the Bidder is unable to meet most of the specifications, but believes their product/work will meet the needs of the city, the Bidder should submit an Alternate Bid and include material specification sheets, performance data, or other documentation justifying consideration.
- b) If a Bidder plans to submit multiple offers, each offer must be packaged separately and identified on the outer envelope and on the cover page of the offer in a way that can be differentiated from the other offer(s).
- c) The Procurement Officer reserves the right to make the final determination of compliance or whether any deviation or alternate is of an equivalent or better quality and which offer can best meet the needs of the City. Such determination shall be incorporated within Purchasing's recommendation to the City Council.

12) ENVIRONMENTAL REQUIREMENTS

- a) The City is committed to becoming a sustainable city that conserves its use of resources to optimize efficiency and minimize waste. The City is committed to providing services in an equitable manner for present and future generations.
- b) Recycled Content Products: It is in the City's interest to purchase products with the highest recycled material content feasible. The City requests that Bidders suggest recycled content products as alternatives.
- c) Recycled Packing Material: The City desires that all shipping containers/packing material for equipment, materials and supplies delivered to the City contain no less than the specified minimum EPA percentage requirements of post-consumer recycled content. Containers and packing material should show the recycled product logo and recycled content percentage information.
- d) To help "Turn Wheaton Green", the bidder's sustainability policy, as well as green initiatives for this solicitation, will be considered in the evaluation of the offer.

13) PRICE

- a) The price offered shall remain firm throughout the duration of the agreement.
- b) Failure to record all requested breakdown of prices may result in disqualification. Unit price shall be shown for each unit specified. In case of mistake in extended price, unit price shall govern.
- c) Price shall represent the entire cost of all requirements stated within the solicitation and contract. No subsequent claim will be recognized for any surcharges, add on costs, increase in material prices, cost indexes, wage scales, fuel surcharges, freight costs, packaging or any other rates affecting the industry or this project.

14) FOR PROJECTS BID AS TIME AND MATERIAL

- a) Time, inclusive of but not limited to salaries, benefits, overtime, set-up, break-down, includes all costs associated with labor for this service.
- b) Material, inclusive of but not limited to goods, components, equipment, includes all costs associated with all items necessary to complete this service.
  - i) Complete illustrative and technical data, drawings, and/or printed literature for the materials or equipment quoted should be included with the offer.
- c) Overhead and Profit shall include all costs not covered under material or labor, such as fixed costs and taxes.

15) DISCOUNTS

- a) Discounts of less than thirty (30) days will not be considered in the evaluation.
- b) Discounts for thirty (30) days or more may be considered in the evaluation.
- c) Where the net offer is equal to an offer with a discount deducted, the award shall be made to the net offer.
- d) Discounts will be figured from the date of receipt of a proper invoice or the approval of the quality of the product received or service completed – whichever is later.

16) TAXES

- a) Unit prices shall not include any local, state or federal taxes.
- b) The City is exempt by law from paying sales tax on goods, equipment, and products permanently incorporated to the project, from State and City Retailer's Occupation Tax, State Service Occupation Tax, State Use Tax, and Federal Excise Tax.
- c) The City's Sales Tax Exemption Number is E9997-4312-07.
- d) The Contractor shall pay sales, consumer, use and other similar taxes.

17) EVALUATION OF OFFERS

- a) Receipt of One (or too few) offers: If the City receives one or too few bids, as defined by the City, from a publicly broadcasted solicitation, the City may reschedule the opening to a later date. The offers received will either be:
  - i) returned unopened to the Bidder for re-submittal at the new due date and time, or
  - ii) if there are no changes in requirements, and pending agreement with the Bidder, held until the new due date and time

- b) If the City does not receive any bids, from a publicly broadcasted solicitation, the City may negotiate with any interested parties.

18) DETERMINING RESPONSIVENESS OF THE OFFER

- a) Responsive bids are inclusive of, but not restricted to: received prior to the due date and time, completed as stated in the solicitation documents, inclusive of all required documents, compliant to all product requirements and specifications, able to meet delivery requirements, accepting of all contract terms and conditions.

19) WAIVERS AND REJECTIONS OF OFFERS

- a) The City reserves the right to waive any informality, technical requirement, deficiency, or irregularity in the offer. The City may conduct discussion with Bidders to further clarify the offer as may be necessary. Correction of the offer shall be effected by submission within 4 hours (e-mail or fax) of a corrected page with changes documented and signed.
- b) The City reserves the right to reject any or all offers for any reason including but not limited to: budgetary constraints, unclear solicitation documents, change in needs, suspicion of collusion, pricing aberrations, front end loading; mathematically unbalanced proposals in which prices for some items are substantially out of proportion to comparable prices, materially unbalanced proposals in which material requirements for some items are substantially higher to comparable proposals; poor quality or poor performance in past City contracts, and other reasons deemed important to the City.
- c) The City reserves the right to accept or reject any offer in which the Bidder names a total price for all the work without breaking down requested material costs, labor costs, and/or overhead and profit.
- d) Multiple offers from an individual, firm, partnership, corporation, or association under the same or different names are subject to rejection unless specifically permitted in the solicitation. Reasonable grounds for believing that a bidder is interested in more than one offer may result in rejection of all offers in which the bidder is interested. Any or all offers will be rejected if there is any reason for believing that collusion exists.
- e) Nothing in this section will preclude a firm acting as a subcontractor to be included as a subcontractor for two or more prime contractors submitting a proposal for work. However, a subcontractor may not submit a proposal as a prime contractor, and a prime contractor may not submit a proposal as a subcontractor.
- f) FOIA: If the City rejects all offers and concurrently provides notice of its intent to reissue the solicitation, the rejected offers remain exempt from FOIA requirements until the City awards or rejects the reissued solicitation.

20) DETERMINING RESPONSIBLENES OF THE BIDDER

- a) The City reserves the right to determine the competence, the financial stability, and the operational capacity, of any Bidder.
- b) Upon request by the City, Bidders shall furnish evidence for the City to evaluate their resources and ability to provide the goods and services required. Such evidence may include; but not be limited to: tour of facilities, staffing levels, listing of equipment and vehicles, listing of personnel's qualifications, certificates, licenses; listing of committed but not yet completed orders; financial statements.
- c) Bidder may be required to submit samples of items within a specified timeframe and at no expense to the City. If not destroyed in testing, samples will be returned at the Supplier's request and expense. Samples which are not requested for return within thirty (30) days will become the property of the City.
- d) Bidders may be required to affect a demonstration of the item or service being proposed. Such demonstration must be at a site convenient and agreeable to the affected City personnel and at no cost to the City.
- e) Bidders may be required to provide references. The City reserves the right to contact said references or other references that may be familiar with the Bidder. The City reserves the right to eliminate a bidder who has not demonstrated the required years of service within the required specialty.
- f) Bidders may be required to provide their internal policy on sustainability.
- g) The City reserves the right to determine if such information might hinder, influence the quality of the work specified, or prevent the prompt completion of additional work such as future maintenance and service.

21) CONFIDENTIAL INFORMATION

- a) Bidders may be required to provide evidence of financial viability. This may be a Dunn and Bradstreet Report, a financial statement prepared by a licensed Certified Public Accountant showing the Bidder's financial condition at the end of the past fiscal year, an annual report.
- b) Bidders may be required to provide other information which they consider proprietary and confidential, and if made known to the public, may affect their ability to compete in the marketplace. Said information will be subject to Illinois State FOIA requirements including the following exemptions:
  - i) (5 ILCS 140/7) (From Ch. 116, par. 207) Sec. 7.
  - ii) Exemptions. (1) The following shall be exempt from inspection and copying: (g) Trade secrets and commercial or financial information obtained from a person or business where the trade secrets or commercial or financial information are furnished under a claim that they are proprietary, privileged or confidential, and that disclosure of the trade secrets or commercial or financial information would cause competitive harm to the person or business and only insofar as the claim directly applies to the records requested.
- c) Bidders considering requests to be proprietary and confidential should submit an additional redacted offer. Failure to do so may result in information becoming available to the public.

22) SELECTION PROCESS

- a) The City endeavors to select the offer meeting the best interests of the City as stated by its City Council based on the totality of lawful considerations.
- b) The City's determination of best overall value may include consideration of the City's internal cost structure for meeting requirements, such as the city's inventory carrying costs, ordering lead times, equipment maintenance costs, standardization, available project management resources, and items typically identified with and relating to a "Life Cycle Cost Analysis".
- c) The City will consider the following non-exclusive list in determining award: soft costs of contract management; total cost of ownership factors such as transition costs, training costs, additional requirements such as spare parts and special tooling.
- d) The City will contact references to verify bidder's ability and skill to perform the work required based on: past work of similar nature, quality of work, proactive nature of work crew, adherence to the project's production schedule and proposed price constraints, and references' experience if the contractor has character, integrity, and a reputation for good judgment.
- e) If the city's evaluation yields a concern with the potentially recommended bidder's ability, the City reserves the right to require a Performance Bond at no additional cost to the city.
- f) Should identical low, responsive and responsible bids be received from two or more Bidders, the City shall exercise one of the following tie breaking methods:
  - i) Tie Bid (two suppliers): The Procurement Officer, with a witness present, may flip a coin with heads representing the Offeror whose name appears first in alphabetical order. If the toss is heads, said Offeror will receive the recommendation to award.
  - ii) Tie Bid (three or more suppliers): The Procurement Officer, with a witness and each vendor present, shall shuffle a new deck of playing cards and have each Offeror cut the cards. The Offeror who cuts the highest card (with Ace high) shall be recommended for award.

23) AWARD

- a) Except as otherwise stated, bidders will be awarded within ninety (90) days from the opening date.
- b) Award is based on the lowest responsive responsible offer; offering the lowest life-cycle cost; providing the best overall value to the City; and deemed most advantageous to the City, price and other factors considered.
- c) When there is a Base Bid and Alternates, the low bidder shall be the lowest responsible and responsive bid submitted for the Base Bid and Alternate A. If all Bids and Alternate A exceed the project budget, the city reserves the right to award to the bidder presenting the best alternatives for the city.
- d) When there is a Base Bid and Options, the low bidder shall be the lowest responsible and responsive bid submitted for the best combinations for the city.
- e) The City reserves the right to award by item, part or portion of an item, group of items, in the aggregate, or to reject any and all offers in whole or in part according to the best interests of the City.

- i) Bidder may restrict their offer to consideration in the aggregate by so stating on the proposal form, but must name a unit price on each item.
- f) The successful Bidder may be required to enter into a contract with the City of Wheaton covering all matters set forth in the solicitation document, and addenda.

24) REQUIREMENTS IF AWARDED THE WORK

- a) Registration: The successful supplier, prior to the execution of the order, or no later than 10 days after receipt of the award document, must be registered to do business in the City of Wheaton and the State of Illinois.
- b) Insurance: The successful Bidder, if awarded by contract, will be required to carry insurance acceptable to the City. (*reference Contract Addendum 1*).
  - i) Certificates of Insurance, Endorsements, and a Waiver of Subjugation must be submitted with the execution of the contract.
  - ii) The Bidders obligation to purchase stated insurance cannot be waived by the city's action or inaction.
- c) Bonds: The successful bidder, if awarded by contract, may be required to provide a bond/bonds. Said bonds must be through a bonding company listed on the Department of the Treasury's Listing of Certified Companies [http://www.fms.treas.gov/c570/c570\\_a-z.html](http://www.fms.treas.gov/c570/c570_a-z.html).
  - i) Surety must be in compliance with any bond requirements mandated by the State of Illinois.
- d) Security Clearance: Background checks inclusive of finger printing MAY be required for contractors servicing secured areas. Contractors will submit a list of employees' names to the Project Manager who will coordinate the background checks with the police department. Said list should include staff to cover absences or reassignment.
  - i) Anyone with a background history showing a conviction for a felony; theft history of any kind, sex offense history, or any crime involving moral turpitude, illegal drug or narcotics use, sale or possession, or anyone showing a felony charge pending, or who has any outstanding warrants of any type, including misdemeanor traffic or felony warrants, may be subject to arrest, and will not be allowed to work under this contract.
  - ii) The contractor shall be responsible for all personnel engaged in the work. Contractor must ensure that: said personnel have been completely and satisfactorily cleared by the City of Wheaton for work within secure areas; a sufficient amount of backup or relief personnel to cover absenteeism or replacement have been completely and satisfactorily cleared or work; equipment and personnel do not enter facilities except as required during the progress of the work.
  - iii) The City reserves the right to request removal of any contractor's employee upon submitting proper justification should such action be considered necessary to the best interests of the City. Contractor is permitted to add/replace personnel with approved backup personnel, or reassign personnel already cleared by the City for work within secure areas. The City must be provided written notice prior to time of replacement.

25) AUDIT

- a) The successful Bidder may be audited by the City or an agent of the City. Audits may be at the request of federal or state regulatory agencies, other governmental agencies, courts of law, consultants hired by the City or other parties which in the City's opinion requires information. Data, information, and documentation will include, but not be limited to, original estimate files, change order estimate files, detailed worksheets, subcontractor proposals, supplier quotes and rebates, and all project related correspondence, and subcontractor and supplier change order files.

26) PROTESTS

- a) Any Bidder who claims to be aggrieved in connection with a solicitation, the selection process, a pending award, or other reasonable issue may initiate a protest.
  - i) Protests involving the solicitation process or stated requirements must be presented in writing via e-mail to the Procurement Officer no later than the last date for questions as reflected on the cover page of this document.

- ii) Protests involving the evaluation of offers, staff recommendations, or the award process must be submitted in writing to the Procurement Officer no later than three business days after bid results are publicly posted.
  - b) Protests must include: the name and address of the protestor; appropriate identification of the solicitation; if an award has been initiated, the award document number (if available), identification of the procedure that is alleged to have been violated; precise statement(s) of the relevant facts; identification of the issue to be resolved; protestor's argument and supporting documentation (Exhibits, evidence, or documents to substantiate any claims).
  - c) A person filing a notice of protest will be required, at the time the notice of protest is filed, to post a bond in the form of a cashier's check in an amount equal to twenty-five percent of the City's estimate of the total volume of the award, or \$1,000, whichever is less.
    - i) If the decision of the Protest does not uphold the action taken by the City, then the City shall return the amount, without deduction, to the Bidder filing the protest.
    - ii) If the decision of the Protest upholds the action taken by the City, then the City shall retain the amount of the cashier's check in payment for a portion of the cost and expense for time spent by City staff in responding to the protest and in conducting the evaluation of the protest.
  - d) Upon receipt of the notice of protest, the Procurement Officer shall stop the award process.
    - i) The Procurement Officer will rule on the protest in writing within two business days from receipt of protest.
    - ii) Appeals of the Procurement Officer's decision must be made in writing within two business days after receipt thereof and submitted to the City Manager for final resolution. Appellant shall have the opportunity to be heard and an opportunity to present evidence in support of the appeal.
    - iii) The City Manager's decision is final.
- 27) OTHER ENTITY USE
- a) Although this solicitation is specific to the City of Wheaton, Offerors have the option of allowing this offer, if awarded by the City to the Offeror, to be available to other local entities and agencies within the DuPage-Kane-Cook-Will and Kendall Counties. If the successful Offeror and the interested entity/agency mutually agree on the Terms and Conditions, inclusive of pricing, both parties may perform business under the authority of this solicitation and contract.
  - b) It is understood that at no time will any city or municipality or other agency be obligated for placing an order for any other city, municipality, or agency; nor will any city or municipality or agency be obligated for any bills incurred by any other city or municipality or agency. Further, it is understood that each agency will issue its own purchase order to the awarded Supplier.

#### **END OF GENERAL INSTRUCTIONS REGARDING THE SOLICITATION OF CONTRACTED SERVICES**

**LED LIGHTING INSTALLATION**  
**GENERAL TERMS AND CONDITIONS FOR CONTRACTORS**

1) **CONTRACT ADMINISTRATION**

- a) A "Work May Proceed" order will be issued by Procurement upon confirmation of a properly executed contract.
- b) Once the "Work May Proceed" order is issued, the contractor's primary contact with the city will become the Project Manager.
- c) The Project Manager's primary responsibility is to assure the city receives the contracted services in accordance to the terms and conditions and specifications of the contract. The Project Manager will, but is not limited to: oversee the entire project from kick-off activities through close out and payment of final invoice; monitor equipment, materials, and project progress; address any quality issues and change orders; verify schedule of Values, output, schedule status; conduct random inspections.
- d) The contractor will provide name and contact information of key contact to the Project Manager for use during time of emergency or at any hour city staff sees fit to do so.
  - a. If security clearance is required for this work, it will be pursued at this time.

2) **COMMUNICATIONS PLAN**

- a) The Contractor shall designate an individual who must be present, at all times, on the site and who will serve as the Contractor's authorized representative throughout the completion of the Work and who shall be readily available to respond to communications. This individual must be a competent, English-speaking individual who is capable of reading and understanding the Contract Documents. This representative shall be subject to receive instructions and have full authority to execute the directions, without delay, and promptly supply any necessary labor, equipment, material, or incidentals to do so. If any person employed shall refuse or neglect to obey the directions of the Project Manager, in anything relating to the Work, or shall appear to be incompetent, disorderly, or unfaithful, he/she shall, upon request of the City, be at once discharged and shall not be employed again on any part of the Work.
- b) The Contractor shall provide the name and phone number of the Contractor's representative who, in the case of an off-hours emergency can be readily accessible and be available for quick response to the site. If that person does not respond within the period of time requested all reasonable costs, including the payment of overtime wages or charges, shall be deducted from payments due the Contractor. Contractor shall immediately notify the Project Manager in writing of any change in the identity and telephone number of the Contractor's representative.
- c) The contractor is required to provide the City's project manager with written/e-mailed bulletins addressing the status of the project throughout the life of the contract.
- d) The bulletins shall cover all work performed and completed and shall confirm the schedule of the work yet to be performed. It shall also state any assumptions and/or exclusions.
- e) The bulletin shall identify problems encountered, or still outstanding, with an explanation of the cause and resolution of the problem or how the problem will be resolved.
- f) The contractor will be responsible for conducting status meetings with the project manager as scheduled. The meetings can be in person or over the phone, at the discretion of the city.

3) **DOCUMENTS**

- a) Contractor is to maintain at the job site a complete and current set of drawings, plans and contract documents; bulletins, supplemental instructions, proposals, change orders, subcontractor's proposals, supplier's invoices, all written requests, and responses to each required change.
- b) All documents must accurately reflect the current status of all pertinent data including changes in the line item quantities and contract sum attributed to change orders.
- c) All documents are to be available to the Project Manager.
- d) All documents are to be available for auditing purposes, FOIA, and other reasons necessitated by the city.

4) **MATERIAL AND EQUIPMENT**

- a) If the offer identifies an item by manufacturer's name, trade name, catalog number, or reference, the contractor shall furnish the item so identified and shall not propose to furnish an "equal".

- b) If the identified item is no longer available, the City must approve any proposed "equal" prior to order placement. The City will not incur any additional costs for the "equal".
- c) All components used in the manufacture or construction of materials, supplies and equipment, and all finished materials, shall be new, the latest make/model, of the best quality, and the highest grade workmanship.
- d) Contractor must provide documentation that any and all Hazardous Material created during the performance of the project work has been disposed of or recycled in compliance with all Illinois Administrative Code Title 35, Part 733 "Standards for Universal Waste Management", and other applicable State, Federal and local regulations.
- e) All material or equipment furnished shall meet the minimum requirements of Occupational Safety & Health Standard (OSHA) published in the Federal Register, U L, or other nationally recognized certifying body.

5) SUBSTITUTIONS

- a) No substitutions will be considered after Notice of Award except under one or more of the following conditions:
  - i) Substitution required for compliance with final interpretations of code requirement or insurance regulations
  - ii) Unavailability of specified products, through no fault of the contractor.
  - iii) Subsequent information discloses inability of specified product to perform properly or to fit in designated space.
  - iv) Manufacturer /fabricator refusal to certify or guarantee performance of specified product as specified.
  - v) When a substitution would be substantially to owner's best interest.
- b) Substitutions will not be considered when items are indicated or implied on shop drawings or product data submittals without formal request.

6) REQUESTS FOR SUBSTITUTION

- a) Submit request for substitution to the attention of the Project Manager. Include documentation confirming compliance of proposed substitution with contract documents.
  - i) For products include: Product description and identification, manufacturer's name, and address. manufacturer's literature, performance and test data, reference standards, samples, name, and address of similar projects on which product was used and dates of installation
  - ii) For construction methods include: detailed description of proposed method, drawings illustrating methods, itemized comparison of proposed substitution with product or method specified, statement regarding the effect of the substitution to the construction schedule
- b) Identify: changes or coordination required, other contracts affected, accurate cost data on proposed substitution in comparison with product or method specified.
- c) Contractor attests that he has personally investigated proposed product or method and determined that it is equal or superior in all respects to that specified; that he will provide the same guarantee for substitution as for product or method specified; that he will coordinate installation of accepted substitutions into the work, making all changes for work to be complete in all respects.
- d) Cost data must include all related costs under contract but excludes owner's redesign, administrative costs of owner, costs under separate contracts.
- e) Contractor will pay all additional costs and expenses for owner and other contractors.
  - i) Acceptance of substitution will require substantial revision of plans, drawings, and contract documents for all related projects.

7) DELIVERY AND STORAGE

- a) Deliveries of documents, materials, equipment etc. are between the hours of 8:30 A.M. and 3:00 P.M. Monday through Friday, excluding holidays, unless otherwise stipulated.
- b) Failure to deliver within a reasonable lead-time as determined by the city, shall constitute authority for the Procurement Officer to purchase in the open market items of comparable grade to replace the items not delivered.

- c) Contractor is to accept material and equipment delivered to the job site and is responsible to store all items in accordance with the manufacturer's written instructions, handling, and protection from weather, damage, and theft for the duration of the contract. Contractor shall be responsible for losses.
  - d) Material delivered shall remain the property of the Contractor until:
    - i) A physical inspection and actual usage of the material is made and found to be acceptable to the City; and
    - ii) Material is determined to be in full compliance with the solicitation documents and executed contract.
    - iii) Where circumstances or conditions exist preventing effective inspection of the goods at the time of delivery, the City of Wheaton reserves the right to inspect the goods within a reasonable time after delivery.
  - e) Contractor assumes full responsibility for protection and safekeeping of the contractor's own materials and equipment stored on premises, and move, if necessary, all stored products which interfere with operations of the city.
  - f) Unless otherwise specified, packaged material shall remain in original containers with labels intact and seals unbroken.
  - g) The contractor shall submit a Material Safety Data Sheet (MSDS) prior to or at the time of delivery for any/all toxic substances per Public Act 83-240, OSHA standards or any other applicable law.
- 8) NONCONFORMING MATERIALS
- a) In the event the delivered material is not in compliance to the specification documents and executed contract, the City will reject the material.
  - b) Contractor shall remove rejected materials at his expense promptly after notification of rejection.
  - c) Contractor shall provide replacement of rejected articles immediately. If replacement is not timely, as determined by the city, the Procurement Officer will purchase in the open market items of comparable grade to replace the items not replaced and the Contractor shall reimburse the City for any expense incurred in excess of contract prices. Such purchases shall be deducted from contract quantities
  - d) The city reserves the right to either: cancel the order; request contractor to issue credit to the city; or deduct such amount from monies owed.
  - e) Should public necessity demand it, the City reserves the right to use or consume items delivered which are substandard in quality, subject to an adjustment in price to be determined by the Procurement Officer.
- 9) WARRANTY / GUARANTEE PERIOD
- a) The Contractor warrants that all goods furnished hereunder will conform in all respects to the terms of this order, including any drawings, specifications, or standards incorporated herein, and/or defects in goods are free from defects in design. Contractor also warrants the goods are suitable for and will perform in accordance with the purposes for which they were intended.
  - b) The Contractor agrees that the supplies or services furnished under this contract shall be covered by the most favorable commercial warranties the Contractor gives to any customer for such supplies or services and that the rights and remedies provided herein are in addition to and do not limit any rights afforded to the City by any other clause of this contract or by law.
  - c) Unless otherwise specified, the contractor shall unconditionally guarantee the materials and workmanship on all equipment furnished by him for a period of one year (Guarantee Period) from date of installation close out.
  - d) If within the Guarantee Period any defects or signs of deterioration are noted which, in the opinion of the City, are due to faulty design and installation, workmanship, or materials, the City shall notify the contractor. At the contractor's expense, the Contractor shall repair or adjust the equipment or parts to correct the condition, or replace the part or equipment to the complete satisfaction of the city.
    - i) Replacement parts of defective components shall be supplied at no cost to the City. Shipping costs for defective parts required to be returned to the contractor shall be paid by the contractor.
- 10) MANUFACTURER'S REQUIREMENTS
- a) All work must be performed according to manufacturer's stated recommendations.
  - b) If manufacturer's stated recommendations conflict with specifications, issues should be addressed in writing to the Project Manager prior to proceeding with any work.

- c) If manufacturer's stated recommendations include required services not listed within the specifications, said services must be considered as inherent to the city's specifications and offers should include said services.
  - d) All work is to be performed consistent to industrial performance standards.
- 11) PERMITS AND LICENSES
- a) The successful contractor shall be responsible for obtaining, at their own expense, all permits and licenses which may be required to complete the contract.
  - b) Contractor represents that it, its employees, agents, and subcontractors shall hold all required licenses, permits, qualifications and certificates, and have duly registered and otherwise complied in all respects with all applicable federal, state and local laws, regulations, and ordinances applicable to the performance of this contract.
- 12) CONTRACTOR USE OF PREMISES
- a) Confine operations at site to areas permitted by all laws, ordinances, and permits, as well as the contract documents.
  - b) The contractor shall control operations to avoid interference with normal traffic flow on and around the site; when necessary provide barriers, warning lights, and signs as required to protect workers and the public.
  - c) Limit use of premises for work, storage of material and equipment, and parking of worker's automobiles.
  - d) Conduct operations in a manner that avoids interference with use of the building and building operations and which protects persons and property.
  - e) If utility shut-down is required, provide Project Manager two (2) days advanced warning and estimation of duration of required utility shutdown.
- 13) UTILITY LOCATION
- a) The contractor must exercise extreme caution while working around existing utilities. The contractor shall notify J.U.L.I.E., utility companies, and the Project Manager before commencing construction work around utility locations within the scope of the project.
- 14) CONTRACTOR IDENTIFICATION
- a) For security purposes, all contracted service providers must be clearly identified with company photo id and company attire.
  - b) Upon Project Manager's approval, contractors requiring unrestricted mobility within designated facilities will require a City of Wheaton Contractor photo id.
  - c) Contractor's advertising decals, stickers or other signs shall not be affixed to equipment or visible to the public.
- 15) MANUALS AND DOCUMENTS
- a) The contractor shall submit to the owner such operating and maintenance manual and repair part lists as required by the nature of the work.
- 16) CLEANING
- a) Contractor shall maintain premises and public properties free from accumulation of waste, debris, and rubbish caused by construction operations. Cleaning and disposal operations must comply with Federal, State and local ordinances and anti-pollution laws.
  - b) Provide on-site metal containers for collection of waste materials, debris, and rubbish.
  - c) At completion of work: sweep paved areas broom clean; remove waste materials, rubbish, tools, equipment, machinery, and surplus materials; clean all sight-exposed surfaces and leave project area clean and ready for use; clean the project site, yard, grounds, and landscaped areas; remove petro- chemical spills, stains, and other foreign deposits; clean plumbing fixtures to a sanitary condition, free of stains.
  - d) Touch-up and otherwise repair and restore marred exposed finishes and surfaces.
- 17) SAFETY AND HEALTH

- a) All Occupational Safety and Health Administration (OSHA) standards apply.
- b) Store volatile wastes in covered metal containers and remove from premises daily.
- c) Provide adequate ventilation during use of volatile or noxious substances.

18) CHANGE ORDER PROCEDURE

- a) The city reserves the right to make changes in the plans and specifications by altering, adding to, or deducting from the work, without invalidating the contract. All such changes shall be executed under the conditions of the original contract, except that any claim for extension of time caused thereby shall be adjusted at the time of ordering such change.
- b) Bulletins: From time to time during progress of the work, the city may issue a bulletin which interprets the contract documents or order minor changes in the work without change in contract sum or contract time.
  - i) Issuance of a bulletin is not to be considered a change order authorizing additional work or affecting project time table. Such changes require a proposal, review, and if approved, a change order.
- c) Should the contractor consider that a change in the specified work, the contract sum or contract time is required, he shall initiate a change order and submit to the Project Manager for documented approval before proceeding with the work.

19) CHANGE ORDERS

- a) Issuance of a statement, or verbal approval, is not to be considered a Change Order and is not authorization to proceed.
- b) Change orders will be numbered in sequence and dated.
- c) Approved Change Orders are required with any/all changes in, the specified work, the contract sum, the time for completion, or any combination thereof.
- d) Change orders will describe the change or changes, will refer to the bulletin(s) and proposal(s) involved, and will be signed by the city and the contractor prior to implementing the change.
- e) All Change Orders shall clearly identify the impact of cost and the effect on time required to perform the work associated with the proposal.
  - i) If the proposal is found to be satisfactory and in proper order, and both parties agree upon cost or credit for the change, the city will authorize the documented Change Order which will be confirmed via contract amendment.
  - ii) Additional requests for additional costs and/or extensions of time for previously proposed and accepted items will NOT be granted after initial acceptance.
- f) The contractor will take measures to ensure contractors and sub-contractor's staff is familiar with the procedures for processing change orders.

20) PAYMENT

- a) Authorization of payment requires receipt of contractor's invoice, acceptance of product/services and receipt of other required paperwork such as: certificate of origin, MSDS, Waivers and Liens, Certified Payroll (if applicable).
- b) Retainage in the amount of ten percent (10%) of a payment request will be deducted from the amount determined for the first fifty percent (50%) of the project for major projects. Retainage will be held until:
  - i) All defective work has been remedied.
  - ii) All work is 100% final and the City's project manager has formally accepted the work.
  - iii) All waivers, liens, certified payrolls, warranty documents and other required documentation are provided.
  - iv) Or, if the work is fifty percent (50%) completed, satisfactory and on schedule, upon the discretion of the Project Manager. In such a case, the city will continue to retain no less than five percent (5%) of the total adjusted contract price.
  - v) Retainage will not apply to payments for Bonds and Mobilization.
- c) Payment will be:
  - i) made to the company awarded this order. Under no circumstances will a third party be reimbursed.
  - ii) Via the City's Purchasing Card Program, MasterCard, in which payment will occur at time of product or service delivery (preferred); or
  - iii) Via supplier generated invoice.

- d) The City complies with the Illinois Local Government Prompt Payment Act which states that any bill approved for payment shall be paid within 30 days after date of approval.
  - i) Invoices must be submitted to the city within six months of order completion. Any invoices submitted in excess of six months from order completion will not be paid.
- 21) **CONTRACTOR SERVICE ISSUES**
  - a) Recourse for non-compliant construction services shall be managed, in any order, via (a) Punch List, (b) Retainage and/or (c) Performance Bonds.
- 22) **LIQUIDATED DAMAGES**
  - a) Delivery delays beyond the contract delivery date will result in added expense to the city. The city shall be paid damages for such delay. Because the amount of damage is extremely difficult to ascertain, the contractor agrees to compensate the city in the amount specified in the document entitled Special Terms and Conditions for Contracted Services in the section entitled Liquidated Damages.
  - b) This amount shall be fixed as liquidated damages that the City will suffer because of such delay, and not as a penalty.
  - c) The City shall have the right to deduct and retain the amount of such liquidated damages from any monies due the contractor.
  - d) The contractor shall be entitled to a reasonable extension of time for unavoidable delay in delivery due to causes not reasonably foreseeable by the parties at the time of the contract execution, and that are entirely beyond the control and without the fault or negligence of the contractor, including, but not limited to, acts of god or the public enemy, war or other national emergency making delivery temporarily impossible or illegal, acts or omissions of other suppliers, strikes and labor disputes not brought on by any act or omission of the supplier, fire, flood, epidemics, quarantines, or freight embargoes.
- 23) **PROCESS TO TERMINATE**
  - a) The service provider shall not be reimbursed until services are compliant.
  - b) If services continue to remain non-compliant, Procurement will prepare a formal Letter of Warning addressing the contractor's Failure to Comply. Contract language states "The City may terminate this Agreement upon seven (7) days written notice to the Contractor."
  - c) If contractor fails to achieve required results within stated timeframe, Procurement will terminate contract.
  - d) The City shall have the right to terminate this Agreement, without cause, upon twenty-one (21) days written notice to the Contractor. The Contractor shall be paid for all work performed in conformance with the Agreement through the effective date of the not for cause termination.

## **END OF GENERAL TERMS AND CONDITIONS FOR CONTRACTORS**

**LED LIGHTING INSTALLATION**  
**SPECIAL TERMS AND CONDITIONS FOR CONTRACTED SERVICE**

1) Introduction

The City of Wheaton has street light fixtures that need to be upgraded to light emitting diode (LED) light heads. The City has purchased the necessary equipment and is need of installation services.

2) Background

The City of Wheaton is in the third year of a three-year project to replace street light fixtures with LED light heads. The City is soliciting bids from qualified electrical contractors for the installation of LED parking lot poles, LED wall pack fixtures, and light poles.

3) Scope

The project work includes:

- (a) Legal removal and disposal of current light fixtures
- (b) Installation of LED light fixtures and poles

4) Location

The installation of LED light heads and poles will take place at the Police Department parking lot, 900 W. Liberty Drive, Wheaton, IL.

5) Timeframe

- (a) Pre-Bid meeting: Tuesday, January 31, 2017 at 9:00 a.m. Location: Police Department parking lot, 900 W. Liberty Drive, Wheaton. Attendance is encouraged, but not mandatory.
- (b) Last date for questions: Friday, February 3, 2017, at 12:00 p.m. local time
- (c) Bid responses due: Wednesday, February 8, 2016 prior to 11:00 a.m. local time
- (d) Bid award: Within thirty days of bid opening date
- (e) Project work to be completed by April 28, 2017

6) Liquidated Damages

- (a) The city retains the right to demand liquidated damages if deadlines are not met.
- (b) For this contract, the contractor agrees to compensate the City in the amount of \$500.00 per calendar day beyond the delivery date specified.
- (c) Any extensions agreed to by executed Change Orders will be considered in the application of Liquidated Damages.

7) Roles and Responsibilities:

What resources are provided by the city?

- (a) The City will provide LED parking lot poles, LED wall pack fixtures, and light poles

What is required from the contractor?

- (b) Bidding Contractor must be licensed, registered and insured
- (c) Bidding Contractor to include 5-year labor warranty in the bid response
- (d) Bidding Contractor to submit references for work completed on municipal projects of similar size and scope

8) Communications Plan

- (a) The Contractor shall attend a pre-construction meeting with the City prior to commencement of any work.
- (b) The successful bidder must submit the following for approval at, or before, the pre-construction meeting:
  - (i) Certificates of Insurance, Endorsements, and a Waiver of Subrogation
  - (ii) Payment and Performance Bond
  - (iii) Project schedule, including anticipated completion date
  - (iv) List of all essential project personnel with job title and experience listed

9) Work Hours

- (a) Monday - Friday 7:00-7:00pm (excluding City holidays) or with the approval of the Project Manager.
- (b) The contractor shall notify the Project Manager at least 48 hours prior to initial start of operations, and prior to any temporary cessation and resumption of operations.

10) Prevailing Wage

- (a) Illinois Prevailing Wage Act 820 ILCS does apply.
- (b) Certified Payroll is required with each invoice.

Waivers of Lien

- (c) The first Application for Payment shall be accompanied by the General Contractor's partial waiver of lien, called Waiver of Lien to Date, for the full amount of payment due.
- (d) Each subsequent Application for Payment shall be accompanied by the General Contractor's Waiver of Lien to Date, plus the partial waivers of lien of Labor, Subcontractors and Material Suppliers who were included in the immediately preceding Application for Payment to the extent of that payment.
- (e) The final Application for Payment must be accompanied by the Final Waiver of Lien for the full amount of the Contract from the General Contractor, Labor, Subcontractors, and Material Suppliers, including those who have not previously furnished such final waivers.

11) Bonds

- (a) A Bid Bond / Bid Deposit is not required.
- (b) A Payment and Performance Bond of one hundred ten percent (110%) of the full contract price is required for the faithful fulfillment of the contract; for the protection of the City from all liens and damages arising out of the work.
- (c) Bond Certificates must be submitted with the signed contract, i.e. no later than 10 days after receipt of the award document.

12) Insurance Requirements

Reference Contract Addendum 1

13) Cost Structure:

- (a) All items of work not specifically mentioned herein which are required to deliver the completed project as specified herein shall be included in the bid proposal.

14) Method of Payment: Partial payment based on progress

Invoices:

- (a) A schedule of dates when pay requests must be submitted will be determined at the preconstruction meeting.
- (b) All invoices must reflect the following applicable information: The Contract Number, the name of the Project, the Name of the Contractor, and the services/deliverables with the price depicted in the same format as the offer.
- (c) Lien waivers must be submitted with each invoice.
- (d) The City shall withhold 10% retainage from each payment due the Contractor. Contract retainage shall be released upon final completion of all work and receipt of all documentation as required by the contract.
- (e) All invoices are mailed to the attention of the Project Manager; City of Wheaton; PO Box 727; Wheaton, IL 60187.

Project Close Out:

- (f) Verification of quality and completion of service
- (g) Completion of Punch List and all areas of non-compliance or incomplete tasks
- (h) Review Liquidated Damages
- (i) Review Retainage
- (j) Final Payment: Prior to authorization of Final Payment, the following documents must be submitted:
  - (i) Completed Waivers and Liens
  - (ii) All Certified Payrolls
  - (iii) Documented completion of the Punch List
  - (iv) Statements of Warranty
  - (v) Written approval of the City's Project Manager

**END OF SPECIAL TERMS AND CONDITIONS FOR CONTRACTED SERVICE**

## **LED LIGHTING INSTALLATION**

### **STATEMENT OF WORK**

#### **1) Specifications**

- (a) The City of Wheaton will provide LED Parking Lot poles, LED wall pack fixtures, and light poles as listed/detailed in scope of work section, below.
- (b) Bidding Electrical Contractors are required to verify that the proposed poles anchor bolt pattern will match the anchor bolt pattern on the existing concrete bases
- (c) The proposed poles will be pre-drilled to match the proposed LED light fixtures except for the two poles located in the front walkway (see scope of work for detail)
- (d) Bidding Electrical Contractor to provide/install new anchor bolt nuts & washers
- (e) Bidding Electrical Contractor to provide/install new wiring from existing concrete base wiring to new LED fixtures
- (f) Bidding Electrical Contractors to qualify existing underground electrical feed wiring to concrete bases to be in good/working condition
- (g) Bidding Electrical Contractors to provide/install two inline fuses per pole (277-volt electrical feed)
- (h) Bidding Electrical Contractor will be responsible for taking pictures of the lamp stamp and ballast info for each of the existing lights (area fixtures wall packs, & ground floods), and provide to the City of Wheaton for DCEO Submittal. The City of Wheaton will be responsible for DCEO Paperwork.
- (i) Bidding Electrical Contractors to include the lawful disposal of all removed poles and light fixtures from job site to City metal recycling dumpster in Public Works yard. All replaced equipment must be recycled/disposed of per state, federal and local regulations.
- (j) 161.3. Contractor to provide documentation after delivery of disposed materials.
- (k) Bidding Electrical Contractor will be responsible for all traffic control as it pertains to the scope of work installation
- (l) Bidding Electrical Contractor will be responsible for providing all signage & barricades as needed to complete work without compromising any safety
- (m) Bidding Electrical Contractor will be responsible for scheduling/coordination with City of Wheaton for installation to minimize disruption to night time lighting & parking areas to be blocked off.
- (n) Bidding Electrical Contractor will be a licensed, registered & insured
- (o) Bidding Electrical to include 5-year labor warranty
- (p) Work to be according/in compliance with NFPA 70 National Electric Code 2011
- (q) Proposed LED lighting in accordance/compliance with ASHRAE/IESNA 90.1 Energy Standards

#### **2) Scope of Work**

- (a) Remove/Dispose of quantity (18) 400-watt metal halide shoebox fixtures installed on quantity (17) poles located in the south lot of the police station.
  - (i) Quantity (16) poles with single fixture
  - (ii) Quantity (1) pole with two fixtures
- (b) Remove/Dispose of quantity (17) 5" x 5" x 30' steel poles located in the south lot of the police station.
- (c) Install quantity (17) 5" x 5" x 30' steel poles (WJM SS5001130-BZ-PC-BC-LAB) on the existing concrete bases utilizing the existing anchor bolts.
- (d) Install quantity (18) LED light fixtures (LITHONIA KAX1 LED P3 40K R3 MVOLT SPA DDBXD)
  - (i) Quantity (16) poles with single fixture
  - (ii) Quantity (1) pole with two fixtures
  - (iii) The new poles will be pre-drilled to match the mounting pattern on the LED fixtures
- (e) Remove/Dispose of quantity (1) 4" x 4" x 15' steel poles located in the front of the police station walk way. NOTE: There are quantity (3) poles located in the front of the police station walk way. Quantity two (2) (center & south) have recently been replaced & do not need replacing.
- (f) Install quantity (1) 6" x 6" x 15' steel poles (LITHONIA SSS 20 5G DM39AS DDB) on the existing concrete bases utilizing the existing anchor bolts. NOTE: This pole is specified to match the

- adjacent poles & the existing anchor bolt pattern. The factory will cut this pole to 15'. The new pole will be pre-drilled to match the mounting pattern on the LED fixtures.
- (g) Install quantity (3) LED light fixtures (LITHONIA KAX1 LED P2 40K R3 MVOLT SPA DDBXD) located in the front of the police station walk way.
  - (h) Drill the two existing poles as needed to accommodate the quantity (2) fixtures.
  - (i) Remove/Dispose of quantity (9) 250-watt metal halide wall pack fixtures located on the police department building. The fixtures are < 12' mounting height.
  - (j) Install quantity (9) LED wall packs (LITHONIA TWH LED 20C 1000 40K T3M MVOLT DDBXD) at the location of the removed metal halide fixtures.
  - (k) Remove/Dispose of quantity (7) 250-watt metal halide ground flood fixtures located around the front of the Police Department.

**END OF STATEMENT OF WORK**



## FEATURES & SPECIFICATIONS

**INTENDED USE** — Square Straight Steel is a general purpose light pole for up to 39-foot mounting heights. This pole provides a robust yet cost effective option for mounting area lights and floodlights.

**CONSTRUCTION** — **Pole Shaft:** The pole shaft is of uniform dimension and wall thickness and is made of a weldable-grade, hot-rolled, commercial-quality steel tubing with a minimum yield of 55 KSI (11-gauge, .1196"), or 50 KSI (7-gauge, .1793"). Shaft is one-piece with a full-length longitudinal high-frequency electric resistance weld. Uniformly square in cross-section with flat sides, small corner radii and excellent torsional qualities. Available shaft widths are 4", 5" and 6".

**Pole Top:** A top cap is provided for all poles that will receive drilling patterns for side-mount luminaire arm assemblies or when ordered with PT option.

**Handhole:** A reinforced handhole with grounding provision is provided at 18" from the base. Positioning the handhole lower may not be possible and requires engineering review; consult Tech Support-Outdoor for further information. Every handhole includes a cover and cover attachment hardware. The handhole has a nominal dimension of 2.5" x 5".

**Base Cover:** A durable ABS plastic two-piece full base cover, finished to match the pole, is provided with each pole assembly. Additional base cover options are available upon request.

**Anchor Base/ Bolts:** Anchor base is fabricated from steel that meets ASTM A36 standards and can be altered to match existing foundations; consult factory for modifications. Anchor bolts are manufactured to ASTM F1554 Standards grade 55, (55 KSI minimum yield strength and tensile strength of 75-95 KSI). Top threaded portion (nominal 12") is hot-dipped galvanized per ASTM A-153.

**HARDWARE** — All structural fasteners are high-strength galvanized carbon steel. All non-structural fasteners are galvanized or zinc-plated carbon steel or stainless steel.

**FINISH** — Standard powder-coat finishes include Dark Bronze, White, Black, Medium Bronze and Natural Aluminum colors. Classic finishes include Sandstone, Charcoal Gray, Tennis Green, Bright Red and Steel Blue colors. Architectural Colors and Special Finishes are available by quote and include, but are not limited to Hot-dipped Galvanized, Paint over Hot-dipped Galvanized, RAL Colors, Custom Colors and Extended Warranty Finishes. Factory-applied primer paint finish is available for customer field-paint applications.

**WARRANTY** — 1-year limited warranty. Complete warranty terms located at:  
[www.acuitybrands.com/CustomerResources/Terms\\_and\\_conditions.aspx](http://www.acuitybrands.com/CustomerResources/Terms_and_conditions.aspx)

**NOTE:** Actual performance may differ as a result of end-user environment and application. Specifications subject to change without notice.

Catalog  
Number

Notes

Type



Anchor Base Poles

# SSS

SQUARE STRAIGHT STEEL

### ORDERING INFORMATION

Lead times will vary depending on options selected. Consult with your sales representative.

Example: SSS 20 5C DM19 DDB

SSS						
Series	Nominal fixture mounting height	Nominal shaft base size/wall thickness <sup>1</sup>	Mounting <sup>2</sup>		Options	Finish <sup>10</sup>
SSS	(See technical information table.)	(See technical information table.)	<b>Tenon mounting</b> PT Open top (includes top cap) T20 2-3/8" O.D. (2" NPS) T25 2-7/8" O.D. (2-1/2" NPS) T30 3-1/2" O.D. (3" NPS) T35 4" O.D. (3-1/2" NPS) <b>KAC/KAD/KSE/KSF/KVR/KVF Drill mounting<sup>3</sup></b> DM19 1 at 90° DM28 2 at 180° DM28 PL 2 at 180° with one side plugged DM29 2 at 90° DM39 3 at 90° DM49 4 at 90° <b>CSX/DSX/AERIS™/OMERO™ Drill mounting<sup>3</sup></b> DM19AS 1 at 90° DM28AS 2 at 180° DM29AS 2 at 90° DM39AS 3 at 90° DM49AS 4 at 90°	<b>AERIS™ Suspend drill mounting<sup>3,4</sup></b> DM19AST_ 1 at 90° DM28AST_ 2 at 180° DM29AST_ 2 at 90° DM39AST_ 3 at 90° DM49AST_ 4 at 90° <b>OMERO™ Suspend drill mounting<sup>3,4</sup></b> DM19MRT_ 1 at 90° DM28MRT_ 2 at 180° DM29MRT_ 2 at 90° DM39MRT_ 3 at 90° DM49MRT_ 4 at 90°	<b>Shipped installed</b> L/AB Less anchor bolts VD Vibration damper TP Tamper resistant handhole cover fasteners HAxy Horizontal arm bracket (1 fixture) <sup>5,6</sup> FDLxy Festoon outlet less electrical <sup>7</sup> CPL12/xy 1/2" coupling <sup>5</sup> CPL34/xy 3/4" coupling <sup>5</sup> CPL1/xy 1" coupling <sup>5</sup> NPL12/xy 1/2" threaded nipple <sup>5</sup> NPL34/xy 3/4" threaded nipple <sup>5</sup> NPL1/xy 1" threaded nipple <sup>5</sup> EHHxy Extra handhole <sup>5,7</sup> MAEX Match existing <sup>8</sup> USPOM United States point of manufacture <sup>9</sup> IC Interior coating <sup>10</sup>	<b>Standard colors</b> DDB Dark bronze DWH White DBL Black DMB Medium bronze DNA Natural aluminum <b>Classic colors</b> DSS Sandstone DGC Charcoal gray DTG Tennis green DBR Bright red DSB Steel blue <b>Architectural Colors and Special Finishes<sup>11</sup></b> Galvanized, Paint over Galvanized, RAL Colors, Custom Colors and Extended Warranty Finishes available.

See footnotes next page.

# SSS Square Straight Steel Poles

## NOTES:

1. Wall thickness will be signified with a "C" (7 Gauge) or a "G" (11-gauge) in nomenclature. "C" - 0.1196" "G" - 0.1793.
2. PT open top poles include top cap. When ordering tenon mounting and drill mounting for the same pole, follow this example: DM28/T20. The combination includes a required extra handhole.
3. The drilling template pattern to be used for a particular luminaire depends on the luminaire that is used. Refer to the Technical Data Section of the Outdoor Binder for Drilling Templates.  
Matrix with Generic Template Link at <http://www.acuitybrands.com/-/media/Files/Acuity/Resources/Tools-and-Documents/Pole%20Resources/Pole%20Anchorage/Matrix%20Document/AnchorBoltMatrix.pdf?la=en>

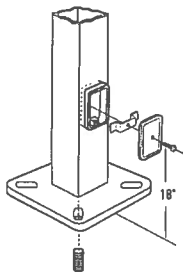
4. Insert "1" or "2" to designate fixture size; e.g. DM19AST2.
5. Specify location and orientation when ordering option.  
For "x": Specify the height above the base of pole in feet or feet and inches; separate feet and inches with a "-".  
Example: 5ft = 5 and 20ft, 3 in = 20-3  
For "y": Specify orientation from handhole (A,B,C,D)  
Refer to the Handhole Orientation diagram below.  
Example: 1/2" coupling at 5' 8", orientation C:  
SSS 20 SC DM19 CPL12/5-8BC DDB
6. Horizontal arm is 18" x 2-3/8" O.D. tenon standard, with radius curve providing 12" rise and 2-3/8" O.D..
7. Combination of tenon-top and drill mount includes extra handhole.

8. Must add original order number of existing pole(s).
9. Use when mill certifications are required.
10. Provides enhanced corrosion resistance.
11. Additional colors available; see [www.lithonia.com/archcolors](http://www.lithonia.com/archcolors) or Architectural Colors brochure (Form No. 794.3). Available by formal quote only, consult factory for details.

TECHNICAL INFORMATION — EPA (ft²) WITH 3-SECOND GUST PER AASHTO 2013																
Series	Mounting Height (ft)	Shaft Base Size	90 MPH	Max. weight	100 MPH	Max. weight	110 MPH	Max. weight	120 MPH	Max. weight	130 MPH	Max. weight	140 MPH	Max. weight	150 MPH	Max. weight
SSS	10	4C	20	500	16	400	13	325	10.5	263	8.5	213	7	175	6	150
SSS	12	4C	16	400	13	325	10	250	8	200	6.5	163	5	125	4	100
SSS	14	4C	13.5	338	10	250	7.5	188	6	150	4.5	113	3.5	88	2.5	63
SSS	16	4C	10.5	263	7.5	188	5.5	138	4	100	3	75	1.5	38	1	25
SSS	18	4C	8	200	5.5	138	4	100	2.5	63	1.5	38	0.5	13	-	-
SSS	20	4C	6	150	4	100	2.5	63	1	25	-	-	-	-	-	-
SSS	20	5C	10	250	7	175	4.5	113	2.5	63	1	25	-	-	-	-
SSS	20	5G	14	350	10	250	7	175	5	125	3	75	1.5	38	0.5	13
SSS	25	4C	2	50	0.5	13	-	-	-	-	-	-	-	-	-	-
SSS	25	4G	5.5	138	3	75	1.5	38	-	-	-	-	-	-	-	-
SSS	25	5C	4.5	113	2	50	-	-	-	-	-	-	-	-	-	-
SSS	25	5G	7.5	188	4.5	113	2	50	0.5	13	-	-	-	-	-	-
SSS	30	4G	1.5	38	-	-	-	-	-	-	-	-	-	-	-	-
SSS	30	5C	-	-	-	-	-	-	-	-	-	-	-	-	-	-
SSS	30	5G	2.5	63	-	-	-	-	-	-	-	-	-	-	-	-
SSS	30	6G	11	275	6	150	2.5	63	-	-	-	-	-	-	-	-
SSS	35	5G	-	-	-	-	-	-	-	-	-	-	-	-	-	-
SSS	35	6G	4	100	-	-	-	-	-	-	-	-	-	-	-	-
SSS	39	6G	-	-	-	-	-	-	-	-	-	-	-	-	-	-

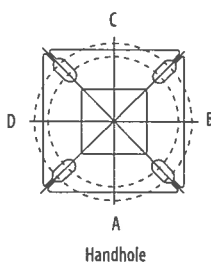
AASHTO 2013 criteria is the most conservative existing EPA calculation. For poles not showing EPA values under AASHTO 2013, EPA values may exist under commercial criteria. Consult Outdoor Tech support to obtain these values.

## BASE DETAIL



POLE DATA						
Shaft base size	Bolt circle A	Bolt projection B	Base square C	Template description	Anchor bolt description	Anchor bolt and template number
4"C	8" - 9"	2-3/4"-4"	8"	ABTEMPLATE PJ50004	AB18-0	ABSSS-4C
4"G	8" - 9"	2-3/4"-4"	8"	ABTEMPLATE PJ50004	AB30-0	ABSSS-4G
5"	10" - 12"	3-3/8"-4"	11"	ABTEMPLATE PJ50010	AB36-0	ABSSS-5
6"	11" - 13"	3-3/8"-4"	12-1/2"	ABTEMPLATE PJ50011	AB36-0	N/A

## HANDHOLE ORIENTATION



## IMPORTANT INSTALLATION NOTES:

- Do not erect poles without having fixtures installed.
- Factory-supplied templates must be used when setting anchor bolts. Lithonia Lighting will not accept claim for incorrect anchorage placement due to failure to use Lithonia Lighting factory templates.
- If poles are stored outside, all protective wrapping must be removed immediately upon delivery to prevent finish damage.
- Lithonia Lighting is not responsible for the foundation design.

## IMPORTANT:

- These specifications are intended for general purposes only. Lithonia reserves the right to change material or design, without prior notice, in a continuing effort to upgrade its products.



POLE-SSS

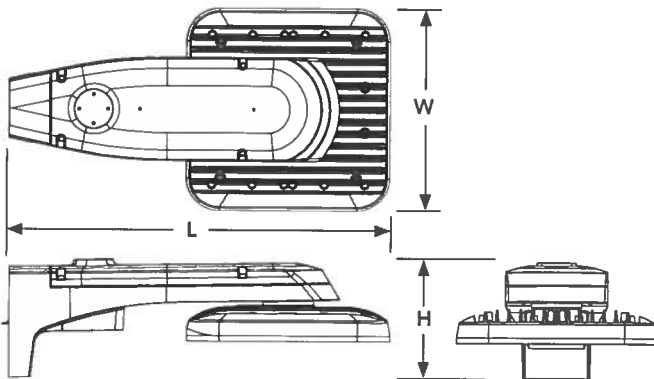


# KAX LED Size 1 LED Area Luminaire



## Specifications

<b>EPA:</b>	0.7 ft <sup>2</sup> (0.07 m <sup>2</sup> )
<b>Length:</b>	25" (64 cm)
<b>Width:</b>	13-1/4" (34 cm)
<b>Height:</b>	7-3/4" (20 cm)
<b>Weight (max):</b>	26 lbs (11.8 kg)



Catalog  
Number

Notes

Type

For the full line of products, visit the Acuity Brands Lighting website.

## Introduction

This feature-rich luminaire embodies the highest level of functionality, and with field-rotatable optics and optional tilt, light can be placed exactly where it's needed. The optics are specifically designed to maximize the light in the desired area and are particularly useful in small to medium sized parking lots or lots requiring higher illuminance levels such as restaurants, banks, service stations, corporate offices and strip malls. By providing the maximum amount of light at minimal cost, the KAX1 is the perfect choice for new installations or retrofit installations replacing up to 400W MH.

## Ordering Information

**EXAMPLE: KAX1 LED P4 40K R3 MVOLT SPA DDBXD**

KAX1 LED						
Series	Performance package	Color temperature		Distribution	Voltage	Mounting
KAX1 LED	P1	30K	3000 K	R3 Type 3	MVOLT <sup>1</sup>	<b>Shipped included</b> SPA Square pole mounting RPA Round pole mounting <b>Shipped separately</b> KMA Mast arm adaptor <sup>2</sup>
	P2	40K	4000 K	R4 Type 4	120 <sup>1</sup>	
	P3	50K	5000 K	R5 Type 5	208 <sup>1</sup>	
	P4				240 <sup>1</sup> 277 <sup>1</sup> 347 480	

Control options	Other options	Finish (per head)
<b>Shipped installed</b> PER NEMA twist-lock receptacle only (no controls) <sup>3,4</sup> PER5 Five-wire receptacle only (no controls) <sup>4,5</sup> PER7 Seven-wire receptacle only (no controls) <sup>4,5</sup> PIR Bi-level, motion/ambient sensor, 8-15' mounting height, ambient sensor enabled at 5fc <sup>6</sup> PIRH Bi-level, motion/ambient sensor, 15-30' mounting height, ambient sensor enabled at 5fc <sup>6</sup> PIR1FC3V Bi-level, motion/ambient sensor, 8-15' mounting height, ambient sensor enabled at 1fc <sup>6</sup> PIRH1FC3V Bi-level, motion/ambient sensor, 15-30' mounting height, ambient sensor enabled at 1fc <sup>6</sup> FAO Field adjustable output <sup>7</sup>	<b>Shipped installed</b> HS House-side shield <sup>8</sup> SF Single fuse (120, 277, 347V) <sup>9</sup> DF Double fuse (208, 240, 480V) <sup>10</sup> TILT Tilt arm <b>Shipped separately</b> BS Bird spikes <sup>8</sup> EGS External glare shield <sup>8</sup>	DDBXD Dark bronze DBLXD Black DNAXD Natural aluminum DWHXD White DDBTXD Textured dark bronze DBLBXD Textured black DNATXD Textured natural aluminum DWHGXD Textured white

## Controls & Shields

<b>Accessories</b> Ordered and shipped separately.	DL127F 1.5 JU	Photocell - SSL twist-lock (120-277V) <sup>11</sup>
	DL1347F 1.5 CUL JU	Photocell - SSL twist-lock (347V) <sup>11</sup>
	DL1480F 1.5 CUL JU	Photocell - SSL twist-lock (480V) <sup>11</sup>
	DSHORT SBK U	Shorting cap <sup>11</sup>
	KMA DDBXD U	Mast arm mounting bracket adaptor (specify finish) <sup>2</sup>
	KAX1HS P1/P2 U	House-side shield (P1, P2)
	KAX1HS P3/P4 U	House-side shield (P3, P4)
	KAXB5 U	Bird spikes
	KAX1EGS U	External glare shield

## NOTES

- 1 MVOLT driver operates on any line voltage from 120-277V (50/60 Hz). Specify 120V, 208V, 240V or 277V options only when ordering with fusing (SF, DF options).
- 2 For use with 2-3/8" mast arm (not included).
- 3 Not available with ROAM®. See PER5 or PER7 option.
- 4 Photocell ordered and shipped as a separate line item from Acuity Brands Controls. See Accessories information.
- 5 If ROAM® node required, it must be ordered and shipped as a separate line item from Acuity Brands Controls.
- 6 PIR and PIR1FC3V specify the SensorSwitch SBGR-10-ODP control; PIRH and PIRH1FC3V specify the SensorSwitch SBGR-6-ODP control; see *Outdoor Control Technical Guide* for details. Dimming driver standard. Not available with PER5 or PER7. Ambient sensor disabled when ordered with DCR. Separate on/off required. Not available with PNMT options.
- 7 Dimming driver standard. Not available with PER5 or PER7.
- 8 Also available as a separate accessory; see Accessories information.
- 9 Must specify 120, 277, or 347V option.
- 10 Must specify 208, 240, or 480V option.
- 11 Requires luminaire to be specified with PER, PER5, or PER7 option. Ordered and shipped as a separate line item from Acuity Brands Controls.

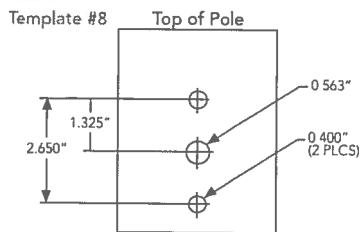
For more control options, visit [371](#) and [3045V](#) online



One Lithonia Way • Conyers, Georgia 30012 • Phone: 800.279.8041 • [www.lithonia.com](http://www.lithonia.com)  
 © 2011-2016 Acuity Brands Lighting, Inc. All rights reserved.

KAX1-LED  
 Rev 06/21/16  
 Page 1 of 3

## Drilling



KAX1 shares a unique drilling pattern with the AERIS™ family. Specify this drilling pattern when specifying poles, per the table below.

DM19AS	Single unit	DM29AS	2 at 90°
DM28AS	2 at 180°	DM39AS	3 at 90°
DM49AS	4 at 90°	DM32AS	3 at 120°

Example: SSA 20 4C DM19AS DBBXD

Visit Lithonia Lighting's [www.lithonia.com](http://www.lithonia.com) to see our wide selection of poles, accessories and educational tools.

\*Round pole top must be 3.25" O.D. minimum

\*\*For round pole mounting (RPA) only

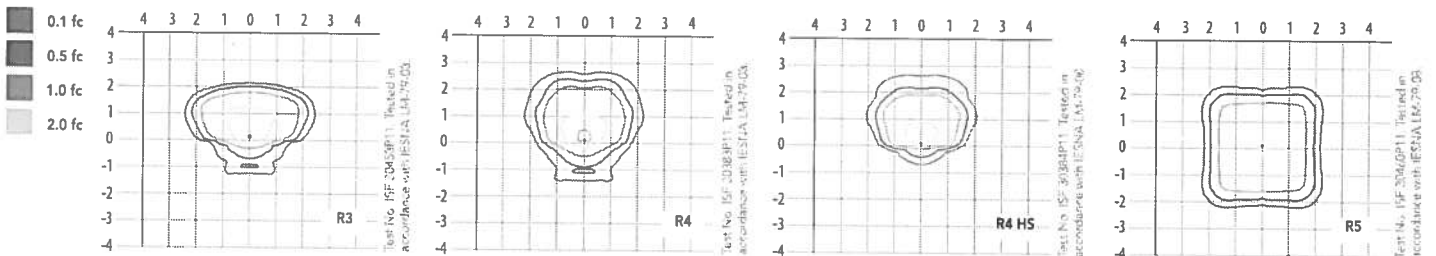
## Tenon Mounting Slipfitter \*\*

Tenon O.D.	Single Unit	2 at 180°	2 at 90°	3 at 120°	3 at 90°	4 at 90°
2-3/8"	AST20-190	AST20-280	AST20-290	AST20-320	AST20-390	AST20-490
2-7/8"	AST25-190	AST25-280	AST25-290	AST25-320	AST25-390	AST25-490
4"	AST35-190	AST35-280	AST35-290	AST35-320	AST35-390	AST35-490

## Photometric Diagrams

To see complete photometric reports or download .ies files for this product, visit Lithonia Lighting's KAX1 Area Light homepage. Isofootcandle plots for the KAX1 LED P4 40K. Distances are in units of mounting height (30').

### LEGEND



## Performance Data

### Lumen Output

Lumen values are from photometric tests performed in accordance with IESNA LM-79-08. Data is considered to be representative of the configurations shown, within the tolerances allowed by Lighting Facts. Contact factory for performance data on any configurations not shown here.

Performance Package	System Watts	Dist. Type	30K (3000 K, 70 CRI)					40K (4000 K, 70 CRI)					50K (5000 K, 70 CRI)				
			Lumens	B	U	G	LPW	Lumens	B	U	G	LPW	Lumens	B	U	G	LPW
P1	50	R3	6,212	1	0	1	124	6,628	1	0	1	133	6,745	1	0	2	135
		R4	6,444	1	0	1	129	6,876	1	0	1	138	6,997	1	0	1	140
		R5	6,826	3	0	1	137	7,283	3	0	1	146	7,411	3	0	1	148
P2	96	R3	10,687	2	0	2	111	11,403	2	0	2	119	11,603	2	0	2	121
		R4	11,087	2	0	2	115	11,829	2	0	2	123	12,037	2	0	2	125
		R5	11,743	3	0	1	122	12,529	3	0	2	131	12,750	3	0	2	133
P3	130	R3	15,567	2	0	3	120	16,609	2	0	3	128	16,902	2	0	3	130
		R4	16,149	2	0	2	124	17,230	2	0	3	133	17,533	2	0	3	135
		R5	17,106	4	0	2	132	18,251	4	0	2	140	18,572	4	0	2	143
P4	160	R3	18,623	3	0	3	116	19,869	3	0	3	124	20,219	3	0	3	126
		R4	19,319	3	0	3	121	20,612	3	0	3	129	20,975	3	0	3	131
		R5	20,463	4	0	2	128	21,833	4	0	2	136	22,217	4	0	2	139

### Lumen Ambient Temperature (LAT) Multipliers

Use these factors to determine relative lumen output for average ambient temperatures from 0-50°C (32-122°F).

\* Shaded cells include active dynamic temperature sensing.

Ambient	Lumen Multiplier			
	P1	P2	P3	P4
0°C	1.05	1.05	1.05	1.05
10°C	1.03	1.03	1.03	1.03
20°C	1.01	1.01	1.01	1.01
25°C	1	1	1	1
30°C	0.99	0.99	0.99	0.99
40°C	0.97	0.97	0.97	0.95
45°C	0.96	0.96	0.93	0.81
50°C	0.95	0.95	0.78	0.67

### Electrical Load

Package		120V	208V	240V	277V	347V	480V
P1	Current (A)	0.42A	0.24A	0.21A	0.18A	0.15A	0.12A
	System Watts	50W	49W	49W	49W	49W	49W
P2	Current (A)	0.80A	0.46A	0.40A	0.35A	0.28A	0.21A
	System Watts	96W	94W	94W	93W	94W	93W
P3	Current (A)	1.08A	0.62A	0.54A	0.47A	0.39A	0.30A
	System Watts	130W	127W	127W	126W	128W	128W
P4	Current (A)	1.33A	0.76A	0.66A	0.58A	0.48A	0.36A
	System Watts	160W	156W	156W	155W	159W	159W

### Projected LED Lumen Maintenance

Operating Hours	25,000	50,000	100,000
Lumen Maintenance Factor	>0.94	>0.89	>0.80

Values calculated according to IESNA TM-21-11 methodology and valid up to 40°C.



## FEATURES & SPECIFICATIONS

### INTENDED USE

This feature-rich luminaire embodies the highest level of functionality with extraordinary efficacy which maximizes your application efficiency providing high levels of light for minimal cost specifically on small to medium sized parking lots like banks, restaurants, service stations, corporate offices and strip malls.

### CONSTRUCTION

Separated die-cast aluminum heat sink and mounting arm allow maximum air flow and separated electrical compartments to promote cool operating environments extending component life. This modular design allows for ease of maintenance and future light engine upgrades. The KAX features a field rotatable optical assembly enabling on-the-fly adjustments when plans change, and can even be tilted upwards if necessary for additional forward throw. The housing is completely sealed against moisture and environmental contaminants (IP66). Low EPA (0.7 ft<sup>-2</sup>) for optimized pole wind loading.

### FINISH

Exterior parts are protected by a zinc-infused Super Durable TGIC thermoset powder coat finish that provides superior resistance to corrosion and weathering. A tightly controlled multi-stage process ensures a minimum 3 mils thickness for a finish that can withstand extreme climate changes without cracking or peeling. Available in both textured and non-textured finishes.

### OPTICS

Individually formed acrylic lenses are engineered for superior application efficiency which maximizes the light in the areas where it is most needed. Light engines are available in 3000 K, 4000 K or 5000 K (minimum 70 CRI) configurations. In its standard configuration the KAX has zero uplight and qualifies as a Nighttime Friendly™ product, meaning it is consistent with the LEED® and Green Globes™ criteria for eliminating wasteful uplight. With the TILT option, the optical assembly can be raised up to 80 degrees for additional forward throw or to provide vertical illumination.

### ELECTRICAL

Light engine(s) configurations consist of high-efficacy LEDs mounted to metal-core circuit boards to maximize heat dissipation and promote long life (>L80/100,000 hours). Class 1 electronic drivers are designed to have a power factor >90%, THD <20%, and an expected life of 100,000 hours. Easily serviceable 10kV surge protection device meets a minimum Category C Low operation (per ANSI/IEEE C62.41.2).

### INSTALLATION

The base of the mounting arm features a universal mounting template to facilitate quick and easy installation. Mounting bolts featuring a 1000-hour salt fog finish are utilized to secure the luminaire providing up to a 1.5 G vibration load rating per ANSI C136.31. The KAX utilizes the AERIS™ series pole drilling pattern. Optional bi-level motion sensor and NEMA 3, 5 or 7 pin twist lock photocontrol receptacle are also available.

### LISTINGS

CSA Listed for wet locations. Light engines and electrical compartment are IP66 rated. Rated for temperatures as low as -40°C minimum ambient.

DesignLights Consortium® (DLC) qualified product. Not all versions of this product may be DLC qualified. Please check the DLC Qualified Products List at [www.designlights.org](http://www.designlights.org) to confirm which versions are qualified.

### WARRANTY

5-year limited warranty. Complete warranty terms located at:

[www.acuitybrands.com/CustomerResources/Terms\\_and\\_Conditions.aspx](http://www.acuitybrands.com/CustomerResources/Terms_and_Conditions.aspx)

**Note:** Actual performance may differ as a result of end-user environment and application. All values are design or typical values, measured under laboratory conditions at 25 °C. Specifications subject to change without notice.



Submitted by GRAYBAR ELECTRIC

**Graybar****Job Name:**  
CITY OF WHEATON POLICE  
DEPARTMENT**Catalog Number:**TWH LED 20C 1000 40K T3M  
MVOLT DDBXD

Notes:

**Type:**

## TWH LED LED Wall Luminaire



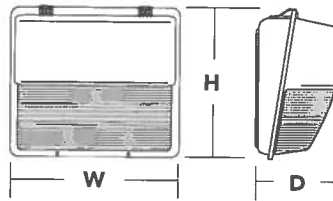
### Specifications

**Width:** 16-1/4"  
(41.3 cm)

**Height:** 15-3/4"  
(40.0 cm)

**Depth:** 8"  
(20.3 cm)

**Weight:** 28 lbs  
(12.7 kg)

Catalog  
Number

Notes

Type

### Introduction

The popular TWH luminaire is now available with LED technology. Cast in a traditional dayform, the TWH LED offers a classic appearance and is powered by advanced LEDs.

The new TWH LED luminaire is powerful yet energy efficient, capable of replacing up to a 400W metal halide luminaire while saving up to 77% in energy costs. Offering an expected service life of more than 20 years, the TWH LED eliminates frequent lamp and ballast replacements associated with traditional technologies.

### Ordering Information

**EXAMPLE:** TWH LED 30C 1000 50K T3M MVOLT DDBXD

TWH LED									
Series	LEDs	Drive current	Color temperature	Distribution	Voltage	Control Options	Other Options	Finish (optional)	
TWH LED	10C 10 LEDs (one engine)	1000 1000 mA (1 A)	40K 4000K 50K 5000K	T3M Type III Medium	MVOLT <sup>1</sup> 120 <sup>1</sup> 208 <sup>1</sup> 240 <sup>1</sup> 277 <sup>1</sup> 347 <sup>1</sup> 480 <sup>2,3</sup>	Shipped installed PER NEMA twist-lock receptacle only (no controls) PE Photoelectric cell, button type <sup>4</sup>	Shipped installed SF Single fuse (120, 277, 347V) <sup>5</sup> DF Double fuse (208, 240, 480V) <sup>5</sup> TP Tamper proof screws NOM NOM Certified SPD Separate surge protection <sup>6</sup> ELSW Emergency battery backup (standard 0°C) <sup>7</sup> ELCW Emergency battery backup (cold weather -20°C) <sup>7</sup> Shipped separately VG Vandal guard <sup>8</sup> WG Wire guard <sup>9</sup>	DDBXD Dark bronze	DBLXD Black
	20C 20 LEDs (two engines)								
	30C 30 LEDs (one engine)								
								DWHXD White	DNAXD Natural aluminum
								DDBTXD Textured dark bronze	DBLTXD Textured black
								DNATXD Textured natural aluminum	DWHGXD Textured white

Stock configurations are offered for shorter lead times:

Standard Part Number	Stock Part Number
TWH LED 10C 1000 40K T3M MVOLT DDBXD	TWH LED 10C 40K
TWH LED 20C 1000 40K T3M MVOLT DDBXD	TWH LED 20C 40K
TWH LED 30C 1000 40K T3M MVOLT DDBXD	TWH LED 30C 40K
TWH LED 10C 1000 50K T3M MVOLT DDBXD	TWH LED 10C 50K
TWH LED 20C 1000 50K T3M MVOLT DDBXD	TWH LED 20C 50K
TWH LED 30C 1000 50K T3M MVOLT DDBXD	TWH LED 30C 50K

### Accessories

Ordered and shipped separately

DLL12ZF 1.5 JU	Photocell - SSL twist-lock (120-277V) <sup>1</sup>
DLL347 1.5 CUL JU	Photocell - SSL twist-lock (347V) <sup>1</sup>
DLL480 1.5 CUL JU	Photocell - SSL twist-lock (480V) <sup>1</sup>
DSHORT SBU U	Shorting cap <sup>9</sup>
TWHVG U	Vandal guard accessory <sup>8</sup>
TWHWG U	Wire guard accessory <sup>9</sup>

For more control options, visit [www.lithonia.com](http://www.lithonia.com) and [www.dlc.com](http://www.dlc.com) online.

### NOTES

- MVOLT driver operates on any line voltage from 120-277V (50/60 Hz). Specify 120, 208, 240 or 277 options only when ordering with fusing (SF, DF options) or photocontrol (PE).
- Not available with 10C option.
- Not available with PE option.
- Must specify voltage; not available with MVOLT. Not available with 480V.
- Single fuse (SF) requires 120, 277 or 347 voltage option. Double fuse (DF) requires 208, 240 or 480 voltage option.
- See the electrical section on page 2 for more details.
- Not available with 30C, 347, 480, PER, or SPD. Emergency mode IES files located on product page at [www.lithonia.com](http://www.lithonia.com). ELSW and ELCW warranty is 3-year period.
- VG and WG options cannot be installed together. Also available as a separate accessory; see Accessories information at left.
- Requires luminaire to be specified with PER option. Ordered and shipped as a separate line item.
- Requires field modification (only when ordered as a separate accessory).



One Lithonia Way • Conyers, Georgia 30012 • Phone 800.279.8041 • [www.lithonia.com](http://www.lithonia.com)  
© 2012-2016 Acuity Brands Lighting, Inc. All rights reserved



**Job Name:**  
CITY OF WHEATON POLICE  
DEPARTMENT

**Catalog Number:**

TWH LED 20C 1000 40K T3M  
MVOLT DDBXD  
Notes:

**Type:****Performance Data****Lumen Output**

Lumen values are from photometric tests performed in accordance with IESNA LM-79-08. Data is considered to be representative of the configurations shown, within the tolerances allowed by Lighting Facts. Contact factory for performance data on any configurations not shown here.

LEDs	Driver Current (mA)	Performance Package	System Watts	Hct. Type	4000K (70 CRI)					5000K (70 CRI)				
					Lumens	R	U	G	LPW	Lumens	R	U	G	LPW
10C (10 LEDs)	1000	10C 1000-K	39W	T3M	3,377	0	3	3	87	3,398	0	3	3	87
20C (20 LEDs)	1000	20C 1000-K	72W	T3M	6,983	1	3	4	97	7,027	1	3	4	97
30C (30 LEDs)	1000	30C 1000-K	104W	T3M	8,375	1	3	5	81	8,427	1	3	5	81

**Lumen Ambient Temperature (LAT) Multipliers**

Use these factors to determine relative lumen output for average ambient temperatures from 0-40°C (32-104°F).

Ambient		Lumen Multiplier
0°C	32°F	1.02
10°C	50°F	1.01
20°C	68°F	1.00
25°C	77°F	1.00
30°C	86°F	1.00
40°C	104°F	0.98

**Projected LED Lumen Maintenance**

Data references the extrapolated performance projections for the TWH LED 30C 1000 platform in a 25°C ambient, based on 10,000 hours of LED testing (tested per IESNA LM-80-08 and projected per IESNA TM-21-11).

To calculate LLF, use the lumen maintenance factor that corresponds to the desired number of operating hours below. For other lumen maintenance values, contact factory.

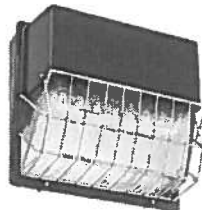
Operating Hours	0	25,000	50,000	100,000
Lumen Maintenance Factor	1.00	0.97	0.93	0.87

**Electrical Load**

LEDs	Driver Current (mA)	System Watts	Current (A)					
			120	208	240	277	347	480
10C	1000	39 W	0.36	0.21	0.18	0.16	-	-
20C	1000	72 W	0.67	0.38	0.33	0.29	0.23	0.17
30C	1000	104 W	0.96	0.56	0.48	0.42	0.33	0.24

**Options and Accessories**

VG - Vandal guard



WG - Wire guard

**FEATURES & SPECIFICATIONS****INTENDED USE**

The energy savings, long life and easy-to-install design of the TWH LED make it the smart choice for building-mounted doorway and pathway illumination for nearly any facility.

**CONSTRUCTION**

Die-cast aluminum housing has an impact-resistant, tempered glass lens that is fully gasketed. Modular design allows for ease of maintenance. The LED driver is mounted to the front casting to thermally isolate it from the light engine for low operating temperature and long life. Housing is completely sealed against moisture and environmental contaminants.

**FINISH**

Exterior parts are protected by a zinc-infused Super Durable TGIC thermoset powder coat finish that provides superior resistance to corrosion and weathering. A tightly controlled multi-stage process ensures a minimum 3 mils thickness for a finish that can withstand extreme climate changes without cracking or peeling. Available in textured and non-textured finishes.

**OPTICS**

Protective glass lens covers the light engine's precision-molded proprietary acrylic lenses. Light engines are available in 4000K and 5000K configurations.

**ELECTRICAL**

Light engine(s) consist of 10 or 30 high-efficacy LEDs mounted to a metal-core circuit board and integral aluminum heat sink to maximize heat dissipation and promote long life (L87/100,000 hrs at 25°C). The electronic driver has a power factor of >90%, THD <20%, and a minimum 2.5 KV

surge rating. When ordering the SPD option, a separate surge protection device is installed within the luminaire which meets a minimum Category C low operation (per ANSI/IEEE C62.41.2).

**INSTALLATION**

Back housing is separated from front housing, eliminating ballast weight and promoting easy handling. Top 3/4" threaded wiring access. Back access through removable 3/4" knockout. Feed-thru wiring can be achieved by using a conduit tee. Mount on any vertical surface. Not recommended in applications where a sprayed stream of water can come in direct contact with glass lens.

**LISTINGS**

UL listed for wet locations. Rated for -40°C minimum ambient. Luminaire is IP55 rated. DesignLights Consortium® (DLC) qualified product. Not all versions of this product may be DLC qualified. Please check the DLC Qualified Products List at [www.designlights.org](http://www.designlights.org) to confirm which versions are qualified.

**WARRANTY**

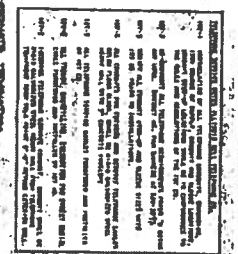
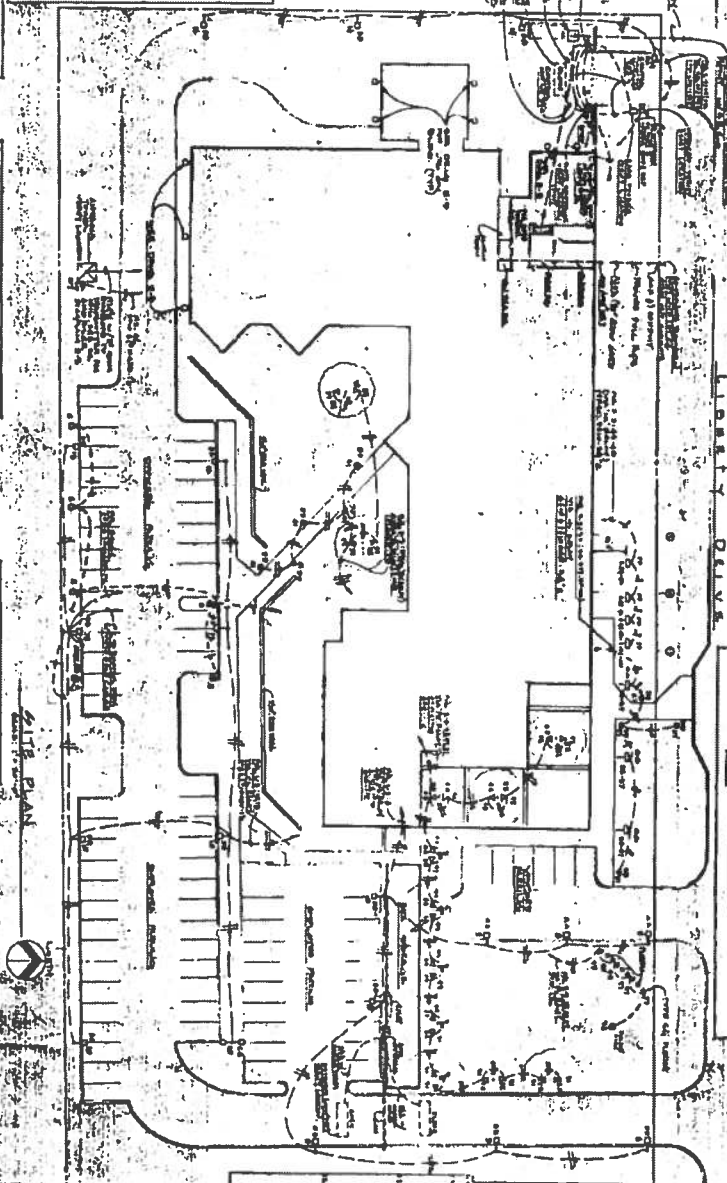
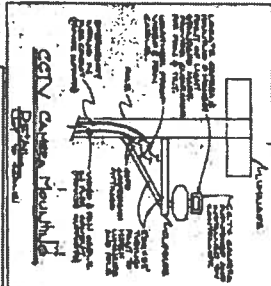
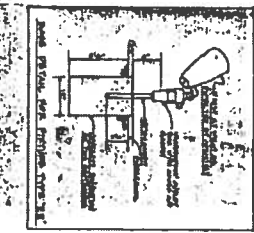
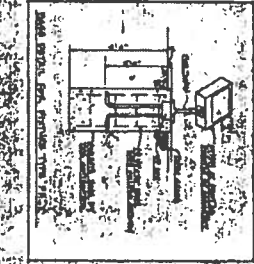
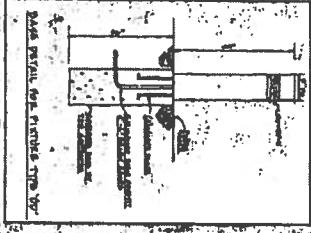
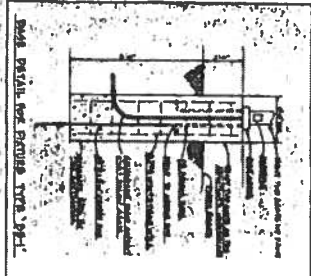
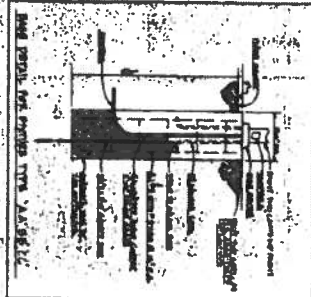
Five-year limited warranty. Complete warranty terms located at [www.graybar.com/lighting/lighting\\_products/warranty\\_terms\\_and\\_conditions.html](http://www.graybar.com/lighting/lighting_products/warranty_terms_and_conditions.html).

**Note:** Actual performance may differ as a result of end-user environment and application. All values are design or typical values, measured under laboratory conditions at 25°C. Specifications subject to change without notice.



One Lithonia Way • Conyers, Georgia 30012 • Phone 800.279.8041 • [www.lithonia.com](http://www.lithonia.com)  
© 2012-2016 Acuity Brands Lighting, Inc. All rights reserved.

TWH-LED  
Rev 10/5/16

[illegible]

# LIGHTING FIXTURE SCHEDULE

SYMBOL	DESCRIPTION	MANUFACTURER	MODEL	WATTAGE	VOLTS	PHASE	FLUSH	WALL	POLE	RECESSED	EXPOSED	OTHER
1	FLUORESCENT, 4' x 4'	OSRAM	40W	40	120	1						
2	FLUORESCENT, 4' x 8'	OSRAM	80W	80	120	1						
3	FLUORESCENT, 8' x 4'	OSRAM	80W	80	120	1						
4	FLUORESCENT, 8' x 8'	OSRAM	160W	160	120	1						
5	FLUORESCENT, 12' x 12'	OSRAM	240W	240	120	1						
6	FLUORESCENT, 12' x 18'	OSRAM	360W	360	120	1						
7	FLUORESCENT, 18' x 18'	OSRAM	540W	540	120	1						
8	FLUORESCENT, 18' x 24'	OSRAM	720W	720	120	1						
9	FLUORESCENT, 24' x 24'	OSRAM	960W	960	120	1						
10	FLUORESCENT, 24' x 36'	OSRAM	1440W	1440	120	1						
11	FLUORESCENT, 36' x 36'	OSRAM	2160W	2160	120	1						
12	FLUORESCENT, 36' x 48'	OSRAM	2880W	2880	120	1						
13	FLUORESCENT, 48' x 48'	OSRAM	3840W	3840	120	1						
14	FLUORESCENT, 48' x 72'	OSRAM	5760W	5760	120	1						
15	FLUORESCENT, 72' x 72'	OSRAM	8640W	8640	120	1						
16	FLUORESCENT, 72' x 96'	OSRAM	11520W	11520	120	1						
17	FLUORESCENT, 96' x 96'	OSRAM	15360W	15360	120	1						
18	FLUORESCENT, 96' x 120'	OSRAM	19200W	19200	120	1						
19	FLUORESCENT, 120' x 120'	OSRAM	25920W	25920	120	1						
20	FLUORESCENT, 120' x 160'	OSRAM	34560W	34560	120	1						
21	FLUORESCENT, 160' x 160'	OSRAM	46080W	46080	120	1						
22	FLUORESCENT, 160' x 200'	OSRAM	59520W	59520	120	1						
23	FLUORESCENT, 200' x 200'	OSRAM	79680W	79680	120	1						
24	FLUORESCENT, 200' x 240'	OSRAM	106560W	106560	120	1						
25	FLUORESCENT, 240' x 240'	OSRAM	141840W	141840	120	1						
26	FLUORESCENT, 240' x 300'	OSRAM	174240W	174240	120	1						
27	FLUORESCENT, 300' x 300'	OSRAM	233280W	233280	120	1						
28	FLUORESCENT, 300' x 360'	OSRAM	307200W	307200	120	1						
29	FLUORESCENT, 360' x 360'	OSRAM	409920W	409920	120	1						
30	FLUORESCENT, 360' x 480'	OSRAM	542880W	542880	120	1						
31	FLUORESCENT, 480' x 480'	OSRAM	729600W	729600	120	1						
32	FLUORESCENT, 480' x 600'	OSRAM	950400W	950400	120	1						
33	FLUORESCENT, 600' x 600'	OSRAM	1267200W	1267200	120	1						
34	FLUORESCENT, 600' x 720'	OSRAM	1659840W	1659840	120	1						
35	FLUORESCENT, 720' x 720'	OSRAM	2211840W	2211840	120	1						
36	FLUORESCENT, 720' x 840'	OSRAM	2905920W	2905920	120	1						
37	FLUORESCENT, 840' x 840'	OSRAM	3882240W	3882240	120	1						
38	FLUORESCENT, 840' x 1000'	OSRAM	5145600W	5145600	120	1						
39	FLUORESCENT, 1000' x 1000'	OSRAM	6912000W	6912000	120	1						
40	FLUORESCENT, 1000' x 1200'	OSRAM	9129600W	9129600	120	1						
41	FLUORESCENT, 1200' x 1200'	OSRAM	12163200W	12163200	120	1						
42	FLUORESCENT, 1200' x 1440'	OSRAM	16003200W	16003200	120	1						
43	FLUORESCENT, 1440' x 1440'	OSRAM	21235200W	21235200	120	1						
44	FLUORESCENT, 1440' x 1680'	OSRAM	28166400W	28166400	120	1						
45	FLUORESCENT, 1680' x 1680'	OSRAM	37526400W	37526400	120	1						
46	FLUORESCENT, 1680' x 2000'	OSRAM	49728000W	49728000	120	1						
47	FLUORESCENT, 2000' x 2000'	OSRAM	66432000W	66432000	120	1						
48	FLUORESCENT, 2000' x 2400'	OSRAM	88576000W	88576000	120	1						
49	FLUORESCENT, 2400' x 2400'	OSRAM	118144000W	118144000	120	1						
50	FLUORESCENT, 2400' x 2880'	OSRAM	157824000W	157824000	120	1						
51	FLUORESCENT, 2880' x 2880'	OSRAM	210624000W	210624000	120	1						
52	FLUORESCENT, 2880' x 3360'	OSRAM	281280000W	281280000	120	1						
53	FLUORESCENT, 3360' x 3360'	OSRAM	375264000W	375264000	120	1						
54	FLUORESCENT, 3360' x 4000'	OSRAM	497280000W	497280000	120	1						
55	FLUORESCENT, 4000' x 4000'	OSRAM	664320000W	664320000	120	1						
56	FLUORESCENT, 4000' x 4800'	OSRAM	885760000W	885760000	120	1						
57	FLUORESCENT, 4800' x 4800'	OSRAM	1181440000W	1181440000	120	1						
58	FLUORESCENT, 4800' x 5600'	OSRAM	1578240000W	1578240000	120	1						
59	FLUORESCENT, 5600' x 5600'	OSRAM	2106240000W	2106240000	120	1						
60	FLUORESCENT, 5600' x 6400'	OSRAM	2812800000W	2812800000	120	1						
61	FLUORESCENT, 6400' x 6400'	OSRAM	3752640000W	3752640000	120	1						
62	FLUORESCENT, 6400' x 7200'	OSRAM	4972800000W	4972800000	120	1						
63	FLUORESCENT, 7200' x 7200'	OSRAM	6643200000W	6643200000	120	1						
64	FLUORESCENT, 7200' x 8000'	OSRAM	8857600000W	8857600000	120	1						
65	FLUORESCENT, 8000' x 8000'	OSRAM	11814400000W	11814400000	120	1						
66	FLUORESCENT, 8000' x 9000'	OSRAM	15782400000W	15782400000	120	1						
67	FLUORESCENT, 9000' x 9000'	OSRAM	21062400000W	21062400000	120	1						
68	FLUORESCENT, 9000' x 10000'	OSRAM	28128000000W	28128000000	120	1						
69	FLUORESCENT, 10000' x 10000'	OSRAM	37526400000W	37526400000	120	1						
70	FLUORESCENT, 10000' x 11200'	OSRAM	49728000000W	49728000000	120	1						
71	FLUORESCENT, 11200' x 11200'	OSRAM	66432000000W	66432000000	120	1						
72	FLUORESCENT, 11200' x 12600'	OSRAM	88576000000W	88576000000	120	1						
73	FLUORESCENT, 12600' x 12600'	OSRAM	118144000000W	118144000000	120	1						
74	FLUORESCENT, 12600' x 14400'	OSRAM	157824000000W	157824000000	120	1						
75	FLUORESCENT, 14400' x 14400'	OSRAM	210624000000W	210624000000	120	1						
76	FLUORESCENT, 14400' x 16000'	OSRAM	281280000000W	281280000000	120	1						
77	FLUORESCENT, 16000' x 16000'	OSRAM	375264000000W	375264000000	120	1						
78	FLUORESCENT, 16000' x 18000'	OSRAM	497280000000W	497280000000	120	1						
79	FLUORESCENT, 18000' x 18000'	OSRAM	664320000000W	664320000000	120	1						
80	FLUORESCENT, 18000' x 20000'	OSRAM	885760000000W	885760000000	120	1						
81	FLUORESCENT, 20000' x 20000'	OSRAM	1181440000000W	1181440000000	120	1						
82	FLUORESCENT, 20000' x 22000'	OSRAM	1578240000000W	1578240000000	120	1						
83	FLUORESCENT, 22000' x 22000'	OSRAM	2106240000000W	2106240000000	120	1						
84	FLUORESCENT, 22000' x 24000'	OSRAM	2812800000000W	2812800000000	120	1						
85	FLUORESCENT, 24000' x 24000'	OSRAM	3752640000000W	3752640000000	120	1						
86	FLUORESCENT, 24000' x 26000'	OSRAM	4972800000000W	4972800000000	120	1						
87	FLUORESCENT, 26000' x 26000'	OSRAM	6643200000000W	6643200000000	120	1						
88	FLUORESCENT, 26000' x 28000'	OSRAM	8857600000000W	8857600000000	120	1						
89	FLUORESCENT, 28000' x 28000'	OSRAM	11814400000000W	11814400000000	120	1						
90	FLUORESCENT, 28000' x 30000'	OSRAM	15782400000000W	15782400000000	120	1						
91	FLUORESCENT, 30000' x 30000'	OSRAM	21062400000000W	21062400000000	120	1						
92	FLUORESCENT, 30000' x 32000'	OSRAM	28128000000000W	28128000000000	120	1						
93	FLUORESCENT, 32000' x 32000'	OSRAM	37526400000000W	37526400000000	120	1						
94	FLUORESCENT, 32000' x 34000'	OSRAM	49728000000000W	49728000000000	120	1						
95	FLUORESCENT, 34000' x 34000'	OSRAM	66432000000000W	66432000000000	120	1						
96	FLUORESCENT, 34000' x 36000'	OSRAM	88576000000000W	88576000000000	120	1						
97	FLUORESCENT, 36000' x 36000'	OSRAM	118144000000000W	118144000000000	120	1						
98	FLUORESCENT, 36000' x 38000'	OSRAM	157824000000000W	157824000000000	120	1						
99	FLUORESCENT, 38000' x 38000'	OSRAM	210624000000000W	210624000000000	120	1						
100	FLUORESCENT, 38000' x 40000'	OSRAM	281280000000000W	281280000000000	120	1						

# LIGHTING FIXTURE SCHEDULE

SYMBOL	DESCRIPTION	MANUFACTURER	MODEL	WATTAGE	VOLTS	PHASE	FLUSH	WALL	POLE	RECESSED	EXPOSED	OTHER
1	FLUORESCENT, 4' x 4'	OSRAM	40W	40	120	1						
2	FLUORESCENT, 4' x 8'	OSRAM	80W	80	120	1						
3	FLUORESCENT, 8' x 4'	OSRAM	80W	80	120	1						
4	FLUORESCENT, 8' x 8'	OSRAM	160W	160	120	1						
5	FLUORESCENT, 12' x 12'	OSRAM	240W	240	120	1						
6	FLUORESCENT, 12' x 18'	OSRAM	360W	360	120	1						
7	FLUORESCENT, 18' x 18'	OSRAM	540W	540	120	1						
8	FLUORESCENT, 18' x 24'	OSRAM	720W	720	120	1						
9	FLUORESCENT, 24' x 24'	OSRAM	960W	960	120	1						
10	FLUORESCENT, 24' x 36'	OSRAM	1440W	1440	120	1						
11	FLUORESCENT, 36' x 36'	OSRAM	2160W	2160	120	1						
12	FLUORESCENT, 36' x 48'	OSRAM	2880W	2880	120	1						
13												
14												
15												
16												
17												
18												
19												
20												
21												
22												
23												
24												
25												
26												
27												
28												
29												
30												
31												
32												
33												
34												
35												
36												
37												
38												
39												
40												
41												
42												
43												
44												
45												
46												
47												
48												
49												
50												
51												
52												
53												
54												
55												
56												
57												
58												
59												
60												
61												
62												
63												
64												
65												
66												
67												
68												
69												
70												
71												
72												
73												
74												
75												
76												
77												
78												
79												
80												
81												
82												
83												
84												
85												
86												
87												
88												
89												
90												
91												
92												
93												
94												
95												
96												
97												
98												
99												
100												

## **COST PROPOSAL: LED LIGHTING INSTALLATION**

Based on Amendment # \_\_\_\_\_ dated \_\_\_\_\_

PLEASE SUBMIT 2 Original Proposals AS FOLLOWS:

- 1) This Page
  - 2) Certification of Compliance
  - 3) Contractor Profile and Submittal Requirements
  - 4) Certificate of Insurance
- Do not submit perforated pages, nor bind your proposal in anything other than paper clips.

We hereby agree to furnish and deliver to the City of Wheaton, in accordance with the Terms and Conditions, Specifications, and Contract Requirements as follows:

Item	Description	Quantity	Unit Cost	Total Cost
a)	Remove and dispose of 400-watt metal halide shoebox fixtures: 16 poles with single fixture, 1 pole with two fixtures	18		
b)	Remove and dispose of 5" x 5" x 30' steel poles	17		
c)	Install 5" x 5" x 30' steel poles on existing concrete bases utilizing existing anchor bolts (WJM SS5001130-BZ-PC-BC-LAB)	17		
d)	Install LED light fixtures: 16 poles with single fixture, 1 pole with two fixtures (Lithonia KAX1 LED P3 40K R3 MVOLT SPA DDBXD)	18		
e)	Remove and dispose of 4" x 4" x 15' steel poles	1		
f)	Install 6" x 6" x 15' steel poles on existing concrete bases utilizing existing anchor bolts (Lithonia SSS 20 5G DM39AS DDB)	1		
g)	Install LED light fixtures (Lithonia KAX1 LED P2 40K R3 MVOLT SPA DDBXD)	3		
h)	Drill two existing poles as needed to accommodate fixtures	2		
i)	Remove and dispose of 250-watt metal halide wall pack fixtures < 12' mounting height	9		
j)	Install LED wall packs (Lithonia TWH LED 20C 1000 40K T3M MVOLT DDBXD)	9		
k)	Remove and dispose of 250-watt metal halide ground flood fixtures	7		
<b>PROJECT TOTAL COST =</b>				

Firm Name \_\_\_\_\_

Signature \_\_\_\_\_

Print Name \_\_\_\_\_

Job Title \_\_\_\_\_

Date Signed \_\_\_\_\_

## **CERTIFICATION OF COMPLIANCE: LED LIGHTING INSTALLATION**

The undersigned, being first duly sworn an oath, deposes and states that he/she has the authority to make this certification on behalf of the bidder for the product, commodity, or service and:

(A) The undersigned certifies that, pursuant to 720 ILCS Act 5, Article 33E of the Illinois Compiled Statutes, the bidder is not barred from bidding on this contract as a result of a conviction for the violation of State of Illinois laws prohibiting bid-rigging or bid-rotating.

(B) The undersigned certifies that, pursuant to 65 ILCS 5/11-42.1-1 of the Illinois Compiled Statutes, the bidder is not delinquent in the payment of any tax administered by the Illinois Department of Revenue.

(C) The undersigned certifies that, pursuant to 30 ILCS 580/3, Section 3 the bidder deposes, states and certifies it will provide a drug free workplace by complying to the Illinois Drug Free Workplace Act.

(D) The undersigned certifies that, pursuant to 820 ILCS 130/1-12 of the Illinois Compiled Statutes, the bidder, when required, is in compliance to all requirements of the Prevailing Wage Act.

(E) The undersigned certifies that, pursuant to 30 ILCS 570/ Section 5 Article 2 of the Illinois Compiled Statutes, the bidder is in compliance to all requirements of the Employment of Illinois Workers on Public Works Act.

(F) The undersigned certifies that they agree to fulfill all Requirements, Specifications, Terms and Conditions.

(G) The undersigned certifies that they agree to fulfill all Contract Requirements.

(H) The undersigned certifies that they agree to present alternative Greener products/processes to the City for consideration in this work.

### ***Check One:***

☐ **There are no conflicts of interest;** In the event that a conflict of interest is identified anytime during the duration of this award, or reasonable time thereafter, you, your firm, or your firm's ownership, management or staff will immediately notify the City of Wheaton in writing.

☐ **There is an affiliation or business relationship** between you, your management or staff, your firm, or your firm's ownership, and an employee, officer, or elected official of the City of Wheaton who makes recommendations to the City of Wheaton with respect to expenditures of money, employment, and elected or appointed positions. Provide any and all affiliations or business relationships that might cause a conflict of interest or any potential conflict of interest. Include the name of each City of Wheaton affiliate with whom you, your firm, or your firm's ownership, management or staff, has an affiliation or a business relationship.

### **This Business Firm is: (check one)**

☐ a Corporation      ☐ a Partnership      ☐ an Individual      ☐ an LLC

Firm Name: \_\_\_\_\_

Firm Address: \_\_\_\_\_  
\_\_\_\_\_

Signature: \_\_\_\_\_

Print Name: \_\_\_\_\_

Position: \_\_\_\_\_

Phone #: \_\_\_\_\_

Fax #: \_\_\_\_\_

e-mail address: \_\_\_\_\_

Date Signed: \_\_\_\_\_

### **Operational Contact for this work**

Name: \_\_\_\_\_

Phone #: \_\_\_\_\_

e-mail: \_\_\_\_\_

### **Sales Contact**

Name: \_\_\_\_\_

Phone #: \_\_\_\_\_

e-mail: \_\_\_\_\_

### **Billing Contact**

Name: \_\_\_\_\_

Phone #: \_\_\_\_\_

e-mail: \_\_\_\_\_

**CUSTOMIZED MAILING LABEL FOR SEALED BID**

XXXXXXXX CUT OUT XXXXXXXX

*Cut along outer border and affix this label to your sealed bid envelope to identify it as a "Sealed Bid".*

**SEALED BID – DO NOT OPEN**

**PROPOSAL FOR: LED LIGHTING INSTALLATION**

-----  
**PROPOSAL FROM:** *(Insert your company name below)*

-----  
Sealed Bid Submittals Due: February 8, 2017 before 11:00 a.m.  
Public Bid Opening: February 8, 2017 at 11:00 a.m.

-----  
**TO BE OPENED BY PROCUREMENT OFFICER**  
-----

**MAIL TO:**

**Procurement Office  
City of Wheaton / City Hall  
P.O. BOX 0727  
303 West Wesley Street  
Wheaton, IL 60187-0727**

## **CONTRACTOR PROFILE AND SUBMITTAL REQUIREMENTS: LED LIGHTING INSTALLATION**

The Contractor shall attach to this proposal:

☒ ***This completed form***

☒ ***Evidence of Experience and Capabilities:***

1. Experience as evidenced by a listing of five (5) references which demonstrate previous successful projects completed by the installer for comparable system during the last three (3) years.

*Complete:*

*Years in business:* \_\_\_\_\_ *Years in business under this name:* \_\_\_\_\_ *Years performing this type of work:* \_\_\_\_\_

2. Work History

*Complete:*

*Value of work: completed in past 12 months: \$* \_\_\_\_\_ *now under contract: \$* \_\_\_\_\_

*Number of Clients: serviced in past 12 months:* \_\_\_\_\_ *now under contract:* \_\_\_\_\_

☒ ***Work Specific Knowledge and Ability***

3. A certification from the product manufacturer stating that the installer has been trained and approved in the installation of the product to be used. Certification letter shall be dated within twelve (12) months of bid date.
4. Manufacturer's product literature, installation recommendations, technical data sheets for each product used, including ASTM test results indicating the product conforms to and is suitable for its intended use per these specifications.
5. Manufacturer's certification that the products to be used meet the applicable referenced standards and these specifications.
6. Attach a list of the areas of work that will be performed by a sub-contractor.

☒ ***Availability and Lead Time***

7. A properly executed Contractor's Qualification statement (AIA document A305).

☒ ***Safe Risk***

8. An Insurance Certificate as evidence that the company is insured
9. Warranty Statement
10. Answer the following questions:

Has your firm:      Failed to complete a contract? Yes No  
                              Been involved in bankruptcy or reorganization? Yes No  
                              Pending judgment claims or suits against firm? Yes No

Have you had any:    OSHA fines within the last three (3) years? Yes No  
                              Job related fatalities within the last five (5) years? Yes No

***If you have answered Yes to any of the above questions, you MUST submit, on a separate sheet, the details describing the circumstances surrounding each incident.***

Firm Name \_\_\_\_\_

Signature \_\_\_\_\_

Print Name \_\_\_\_\_

Job Title \_\_\_\_\_

Date Signed \_\_\_\_\_

**Agreement Between the City of Wheaton, Illinois  
and \_\_\_\_\_**

**LED LIGHTING INSTALLATION**

**This Agreement** is entered into by and between the City of Wheaton, an Illinois municipal corporation ("City"), 303 West Wesley Street, Wheaton, IL 60187, and \_\_\_\_\_, ("Contractor"), *address*.

**WITNESSETH:**

**Whereas**, the City has determined that it is necessary to hire a contractor to provide labor, and/or materials and/or equipment to perform LED Lighting Installation (hereinafter the "Work") as more fully recited in the Invitation to Bid issued January 2017, which is incorporated herein as Exhibit A [Exhibit A will be the City Solicitation Package]; and

**Whereas**, the City has heretofore requested proposals for the work, materials, and services necessary to perform the services and complete all the work as specified in Exhibit A; and

**Whereas**, the Contractor did submit a proposal to the City for the Work specified, which is attached hereto and incorporated herein as Exhibit B [Exhibit B will be the proposal.]; and

**Whereas**, the City did on the \_\_\_\_\_ day of \_\_\_\_\_, 2017, select the Contractor for the work specified in this Agreement and Exhibits.

Now, therefore, for in consideration of their mutual promises, terms, covenants, agreements, and conditions recited in this Agreement, the City and the Contractor hereto do hereby agree as follows:

1. Scope of Services. The Recital paragraphs are incorporated herein as substantive terms and conditions of this Agreement and as representing the intent of the Parties. Any inconsistency between the Work as stated by the City and the work as proposed by the contractor shall be controlled by the Work as stated by the City unless specifically varied in writing to the contrary in this paragraph.

The Contractor shall furnish all labor, materials, and equipment to provide and perform the Work. The Contractor represents and warrants that it shall perform the Work in a manner consistent with the level of care and skill customarily exercised by other professional contractors under similar circumstances. The contractor shall be responsible for the work performed under the Contract Documents and every part thereof, and for all materials, tools, equipment, appliances, and property of any and all description used in connection with the Work. The contractor assumes all risks for direct and indirect damage or injury to the property or persons used or employed on or in connection with the Work contracted for, and of all damage or injury to any person or property wherever located, resulting from any action, omission, commission, or operation under this contract, or in any way whatsoever with the Work.

2. Compensation. The City shall compensate the Contractor per the terms of the Contractor's proposal which is attached hereto as Exhibit B,

3. Waivers of Lien: The City reserves the right to require waivers of lien before payment where the City deems it to be in its best interest to do so.

4. Term of Agreement. This Agreement shall become effective upon the latter of the date accepted and signed by the City and the date accepted and signed by the Contractor and shall terminate upon the written approval of the City's Project Manager. The City, at its option, may extend this Agreement for an additional term if the Contractor holds firm to the original proposal prices, conditions, and specifications.

5. Time is of the Essence. Time is of the essence in the performance of all the terms and conditions of this agreement. Failure to meet stated terms may result in Liquidated Damages in the amount of \$500.00 per calendar day beyond the delivery date specified.

6. Additional Services. The Contractor shall provide only the Work specified in this Agreement and attached Exhibits. In the event the Contractor, Engineer or the City determines that additional goods and/or services are required to complete the Work, such additional goods shall not be provided and/or such additional services shall not be performed unless authorized in writing by the City via the attached change order form [Exhibit C will be the Change Order Form]. Terms, frequency, and prices for additional work shall be as mutually agreed upon in writing by the City and the Contractor.

7. Integration. The provisions set forth in this Agreement represent the entire agreement between the parties and supersede all prior agreements, contracts, promises, and representations, as it is the intent of the parties to provide for a complete integration within the terms of this Agreement. This Agreement may be modified only by a further written agreement between the parties, and no modification shall be effective unless properly approved and signed by each party via change order or amendment. No course of conduct before, or during the performance of this Agreement, shall be deemed to modify, change, or amend this Agreement.

8. Waiver. Any failure of either the City or the Contractor to strictly enforce any term, right, or condition of this Agreement, whether implied or expressed, shall not be construed as a waiver of such term, right, or condition.

9. Compliance with Laws. The Contractor shall comply with all applicable federal, state, and local laws, rules, and regulations, and all City ordinances, rules, and regulations now in force or hereafter enacted, in the provision of the goods and/or performance of the services required under this Agreement.

10. Freedom of Information Act: The Contractor shall, within twenty-four hours of the City's request, provide any documents in the Contractor's possession related to the contract which the City is required to disclose to a requester under the Illinois Freedom of Information Act. This provision is a material covenant of this Agreement. Contractor agrees to not apply any costs or charge any fees to the City regarding the procurement of records required pursuant to a FOIA request. Should Contractor request that City utilize a lawful exemption under FOIA in relation to any FOIA request thereby denying that request, Contractor agrees to pay all costs connected therewith (such as reasonable attorney's and witness fees, filing fee, and any other expenses) to defend the denial of the request. The defense shall include, but not be limited to, challenged or appealed denials of FOIA requests to either the Illinois Attorney General or a court of competent jurisdiction. Contractor agrees to defend, indemnify, and hold harmless City, and agrees to pay all costs connected therewith (such as reasonable attorney's and witness fees, filing fees and any other expenses) to defend any denial of a FOIA request by Contractor's request to utilize a lawful exemption to City.

11. Discrimination Prohibited. The Contractor shall comply with the provisions of the Illinois Human Rights Act, as amended, 775 ILCS 5/1-101 et seq. (1992 State Bar Edition), and with all rules and regulations established by the Department of Human Rights. The Contractor agrees that it will not deny employment to any person or refuse to enter into any contract for services provided for in this Agreement to be performed on its behalf on the basis of unlawful discrimination as defined in the Illinois Human Rights Act.

12. Prevailing Wage: Where applicable, the contractor and any subcontractors shall comply with all provisions of the Prevailing Wage Act, 820 ILCS 130/1 et seq., or any successor statute, and the documents entitled "Special Provisions for: Wages of Employees on Public Works," and "DuPage County Prevailing Wage for ..." which are attached hereto and incorporated as an Addendum 2. Rates reflected in the Addendum are subject to change. The City of Wheaton provides no legal advice or opinion whether the Act is or is not applicable to this contract.

13. Status of Independent Contractor. Both City and Contractor agree that Contractor will act as an Independent Contractor in the performance of the Work. Accordingly, the Independent Contractor shall be responsible for payment all taxes including federal, state, and local taxes arising out of the Contractor's activities in accordance with this agreement, including by way of illustration but not limitation, federal and state income tax, social security tax, and any other taxes or license fees as may be required under the law. Contractor further acknowledges under the terms of this Agreement, that it is not an agent, employee, or servant for the City for any purpose, and that it shall not hold itself out as an agent, employee, or servant of the City under any circumstance for any reason. Contractor is not in any way authorized to make any contract, agreement, or promise on behalf of City, or to create any implied obligation on behalf of City, and Contractor specifically agrees that it shall not do so. City shall have no obligation to provide any compensation or benefits to Contractor, except those specifically identified in this Agreement. City shall not have the authority to control the method or manner by which Contractor complies with the terms of this Agreement.

14. Assignment; Successors and Assigns. Neither this Agreement, nor any part, rights, or interests hereof, may be assigned, to any other person, firm, or corporation without the written consent of all other parties. Upon approval of assignment, this Agreement and the rights, interests and obligations hereunder shall be binding upon and shall inure to the benefit of the parties hereto and their respective successors and assigns.

15. Non-disclosure. During the course of the Work Contractor may have access to proprietary and confidential information including, but not limited to, methods, processes, formulae, compositions, systems, techniques, computer programs, databases, research projects, resident name and address information, financial data, and other data. Contractor shall not use such information for any purpose other than described in this Agreement and Exhibits and shall not directly or indirectly disclose or disseminate such information to any third party without the express written consent of the City.

16. Hold Harmless and Indemnification. The Contractor shall defend, hold harmless, and indemnify the City, its directors, officers, employees, agents, and elected officials, in whole or in part from and against any and all liabilities, losses, claims, demands, damages, fines, penalties, costs, and expenses, judgment, or settlement, including, but not limited to, reasonable attorneys' fees and costs of litigation including reasonable expert witness, and all causes of action of any kind or character, that may be incurred as a result of bodily injury, sickness, death, or property damage or as a result of any other claim or suit of any nature whatsoever arising from or in any manner connected with directly or indirectly, the negligent acts,

errors, omissions, or intentional acts or omissions, or omissions of any agent, subcontractor, or contractor hired to perform any services on behalf of the Contractor.

17. Patents: The successful contractor agrees to protect, defend, and save the City harmless against any demand for payment for the use of any patented material process, article, or device that may enter into the manufacture and construction, or form a part of the work covered by the contract.

18. Termination of Contract. If the Contractor fails to perform according to the terms of this Agreement, then the City may terminate this Agreement upon seven (7) days written notice to the Contractor. In the event of a termination, the City shall pay the Contractor for services performed as of the effective date of termination, less any sums attributable, directly or indirectly, to Contractor's breach. The City shall have the right to terminate this Agreement, without cause, upon twenty-one (21) days written notice to the Contractor. The Contractor shall be paid for all work performed in conformance with the Agreement through the effective date of the not for cause termination. The written notice required under this paragraph shall be either (i) served personally during regular business hours; (ii) served by facsimile data transmission during regular business hours; (iii) by e-mail or (iv) served by certified or registered mail, return receipt requested, addressed to the address listed in this Agreement with postage prepaid and deposited in the United States mail. Notice served personally and by facsimile data transmission shall be effective upon receipt, and notice served by United States mail shall be effective three (3) business days after mailing.

19. Cancellation for Unappropriated Funds: The obligation of the City for payment to a Contractor is limited to the availability of funds appropriated in a current fiscal period, and continuation of the contract into a subsequent fiscal period is subject to appropriation of funds, unless otherwise authorized by law.

20. Default. In case of default by the contractor, the City will procure articles or service from other sources and hold the contractor responsible for any excess cost incurred as provided for in Article 2 of the Uniform Commercial Code. The City reserves the right to cancel the whole or any part of the contract if the contractor fails to perform any of the provisions in the contract, fails to make delivery within the time stated, becomes insolvent, suspends any of its operations, or if any petition is filed or proceeding commenced by or against the Seller under any State or Federal law relating to bankruptcy arrangement, reorganization, receivership, or assignment for the benefit of creditors. The contractor will not be liable to perform if situations arise by reason of strikes, acts of God or the public enemy, acts of the City, fires, or floods.

21. Force Majeure. No party hereto shall be deemed to be in default or to have breached any provision of this Agreement as a result of any delay, failure in performance or interruption of services resulting directly or indirectly from acts of God, acts of civil or military disturbance, or war, which are beyond the control of such non-performing party.

22. Other Entity Use. The Contractor may, upon mutual agreement, permit any municipality or other governmental agency to participate in the contract under the same prices and terms and conditions, if agreed to by both the Contractor and the other municipality or governmental agency.

23. Notification. All notification under this Agreement shall be made as follows:

*If to the Contractor:*  
*Contractor Name*  
*Attn:*

*If to the City:*  
*City of Wheaton*  
*Attn: City Clerk*

Street Address  
City, State, Zip  
Fax #  
e-mail

303 West Wesley Street Box 727  
Wheaton, IL 60189-727  
Fax # 630-260-2017  
e-mail [cityclerk@wheaton.il.us](mailto:cityclerk@wheaton.il.us)

24. Severability. If any provision of this Contract is held to be illegal, invalid, or unenforceable, such provision shall be fully severable, and this Contract shall be construed and enforced as if such illegal, invalid, or unenforceable provision were never a part hereof; the remaining provisions hereof shall remain in full force and effect and shall not be affected by the illegal, invalid, or unenforceable provision or by its severance; and in lieu of such illegal, invalid, or unenforceable provision there shall be added automatically as part of this agreement, a provision as similar in its terms to such illegal, invalid, or unenforceable provision as may be possible and legal, valid and enforceable.

25. Recovery of Costs. In the event the City is required to file any action, whether legal or equitable, to enforce any provision of this Agreement, the City shall be entitled to recover all costs and expenses incurred as a result of the action or proceeding, including expert witness and attorney's fees, if so provided in any order of the Court.

26. Governing Law. This agreement is governed by the laws of the State of Illinois. Exclusive jurisdiction for any litigation involving any aspect of this Agreement shall be in the Eighteenth Judicial Circuit Court, DuPage County, Illinois.

In Witness Whereof, the parties have entered into this Agreement this \_\_\_\_\_ day of *month*, *year*.

City of Wheaton, an Illinois municipal corporation

By: \_\_\_\_\_ Date: \_\_\_\_\_

Title: \_\_\_\_\_

Attest:

\_\_\_\_\_  
Sharon Barrett-Hagen, City Clerk

Contractor Name

By: \_\_\_\_\_ Date: \_\_\_\_\_

Title: \_\_\_\_\_

Attest:

\_\_\_\_\_

### Special Provisions for: Insurance Coverage for Contractual Services

The Contractor and each of its agents, subcontractors, and consultants hired to perform the Work, shall purchase and maintain during the term of this contract insurance coverage which will satisfactorily insure the Contractor and where appropriate, the City against claims and liabilities which may arise out of the Work. Such insurance shall be issued by companies authorized to do business in the State of Illinois and approved by the City. The insurance coverages shall include, but not necessarily be limited to, the following:

- **Worker's Compensation Insurance** with limits as required by the applicable statutes of the State of Illinois. The employer's liability coverage under the worker's compensation policy shall have limits not less than **FIVE HUNDRED THOUSAND DOLLARS (\$500,000)** and each accident/injury and **FIVE HUNDRED THOUSAND DOLLARS (\$500,000)** each employee/disease and **FIVE HUNDRED THOUSAND DOLLARS (\$500,000)** policy limit.  
The workers compensation policy shall provide a waiver of subrogation (aka Waiver of our Right to Recover from Others Endorsement), to the City.
- **Commercial General Liability Insurance** protecting the Contractor against any and all liability claims which may arise in the course of performance of this contract. The limits of liability shall be not less than **ONE MILLION DOLLARS (\$1,000,000)** each occurrence bodily injury/property damage combined single limit and **ONE MILLION DOLLARS (\$1,000,000)** aggregate bodily injury/property damage combined single limit. The policy of commercial liability insurance shall include contractual liability coverage and an endorsement naming the City as an additional insured on a primary and non-contributory basis. Completed Operations coverage shall continue for a period of two years after completion of the project. XCU coverage shall be included.
- **Commercial Automobile Liability Insurance** covering the Contractor's owned, non-owned, and hired vehicles which protects the Contractor against automobile liability claims whether on or off of the city's premises with coverage limits of not less than **ONE MILLION DOLLARS (\$1,000,000)** per accident bodily injury/property damage combined single limit. The policy of commercial liability insurance shall include contractual liability coverage and an endorsement naming the City as an additional insured on a primary and non-contributory basis.
- **Umbrella or Excess Liability Insurance** coverage of not less than **ONE MILLION (\$1,000,000)** per occurrence.

Nothing herein set forth shall be construed to create any obligation on the part of the City to indemnify Contractor for any claims of negligence against Contractor or its agents, employees, subcontractors or consultants. Prior to commencement of any work under this Agreement, Contractor shall file with the City the required original certificates of insurance with endorsements, including those of subcontractors, which shall clearly state all of the following:

- A. The policy number; name of insurance company; name and address of the agent or authorized representative; name, address, and telephone number of the insured; project name and address; policy expiration date; and specific coverage amounts; and
- B. That the City of Wheaton (including its agents, elected officials, officers and employees) is named as an additional insured under all coverage, except Workers' Compensation, and that all such coverage shall be primary and non-contributory for the City, its agents, elected officials, officers, and employees. A

waiver of subrogation (aka Waiver of our Right to Recover from Others Endorsement), on all coverages shall be provided; and

- C. Should any of the above described policies be cancelled before the expiration date thereof, notice will be delivered in accordance with the policy provisions; and
- D. Contractor's insurance is primary with respects to any other valid or collectible insurance City may possess, including any self-insured retention that City may have; and
- E. Any deductibles or self-insured retention shall be stated on the certificates of insurance provided to the City; and

In addition to all of the insurance requirements identified above and contained on the certificates of insurance, all policies of insurance coverage under this section shall also be subject to the following requirements.

- F. All insurance carriers providing coverage under this Agreement shall be authorized to do business in the State of Illinois and shall be rated at least A:VI in A.M. Best and Companies Insurance Guide or otherwise acceptable to the City.
- G. The City of Wheaton shall have the right to reject the insurer/insurance of the contractor or any subcontractor; and
- H. Occurrence policies are preferred. The city may accept claims made policies for Professional Liability or Pollution/Environmental Liability on a case by case basis providing the contractor purchases a claims made policy for four (4) years past the contract completion date.
- I. The City will consider deductible amounts as part of its review of the financial stability of the bidder; and
- J. No acceptance and/or approval of any insurance by the City shall be construed as relieving or excusing the Contractor, or the surety, or its bond, from any liability or obligation imposed upon either or both of them by the provisions of the Contract Documents; and
- K. The City may require increases in Contractor's insurance coverage amounts over the course of this Agreement as it deems necessary so long as it reimburses Contractor for the actual increase in Contractor's insurance premiums attributable to the City's requested increase; and
- L. Insurance coverage required by this contract shall be in force throughout the Contract Term and upon written request by the City, the Contractor shall, within 7 days, provide to the City acceptable evidence of current insurance. Should the Contractor fail to provide acceptable evidence of current insurance following written request, the City shall have the absolute right to terminate the Contract without any further obligation to the Contractor; and
- M. Contractual and other liability insurance provided under this Contract shall not contain a supervision, inspection or engineering services exclusion that would preclude the City from supervising or inspecting the project to the end result. The Contractor shall assume all on-the-job responsibilities as to the control of persons directly employed by it; and
- N. All existing structures, utilities, roads, services, trees, shrubbery and landscaping shall be protected against damage or interruption of service at all times by the Contractor and its subcontractors during the term of the Contract.

***END OF SPECIAL PROVISIONS FOR INSURANCE COVERAGE FOR CONTRACTUAL SERVICES***



# CERTIFICATE OF LIABILITY INSURANCE

DATE (MM/DD/YYYY)

THIS CERTIFICATE IS ISSUED AS A MATTER OF INFORMATION ONLY AND CONFERS NO RIGHTS UPON THE CERTIFICATE HOLDER. THIS CERTIFICATE DOES NOT AFFIRMATIVELY OR NEGATIVELY AMEND, EXTEND OR ALTER THE COVERAGE AFFORDED BY THE POLICIES BELOW. THIS CERTIFICATE OF INSURANCE DOES NOT CONSTITUTE A CONTRACT BETWEEN THE ISSUING INSURER(S), AUTHORIZED REPRESENTATIVE OR PRODUCER, AND THE CERTIFICATE HOLDER.

**IMPORTANT:** If the certificate holder is an ADDITIONAL INSURED, the policy(ies) must be endorsed. If SUBROGATION IS WAIVED, subject to the terms and conditions of the policy, certain policies may require an endorsement. A statement on this certificate does not confer rights to the certificate holder in lieu of such endorsement(s). **A waiver of subrogation is required.**

PRODUCER	CONTACT NAME:	
	PHONE (A/C, No. Ext):	FAX (A/C, No):
INSURED	E-MAIL ADDRESS:	
	INSURER(S) AFFORDING COVERAGE	
	NAIC #	
	INSURER A :	
	INSURER B :	
	INSURER C :	
INSURER D :		
INSURER E :		
INSURER F :		

**COVERAGES****CERTIFICATE NUMBER:****REVISION NUMBER:**

THIS IS TO CERTIFY THAT THE POLICIES OF INSURANCE LISTED BELOW HAVE BEEN ISSUED TO THE INSURED NAMED ABOVE FOR THE POLICY PERIOD INDICATED. NOTWITHSTANDING ANY REQUIREMENT, TERM OR CONDITION OF ANY CONTRACT OR OTHER DOCUMENT WITH RESPECT TO WHICH THIS CERTIFICATE MAY BE ISSUED OR MAY PERTAIN, THE INSURANCE AFFORDED BY THE POLICIES DESCRIBED HEREIN IS SUBJECT TO ALL THE TERMS, EXCLUSIONS AND CONDITIONS OF SUCH POLICIES. LIMITS SHOWN MAY HAVE BEEN REDUCED BY PAID CLAIMS.

INSR LTR	TYPE OF INSURANCE	ADDL INSR	SUBR WVD	POLICY NUMBER	POLICY EFF (MM/DD/YYYY)	POLICY EXP (MM/DD/YYYY)	LIMITS
	<b>GENERAL LIABILITY</b>						EACH OCCURRENCE \$ <b>\$1,000,000</b>
	<input type="checkbox"/> COMMERCIAL GENERAL LIABILITY						DAMAGE TO RENTED PREMISES (Ea occurrence) \$
	<input type="checkbox"/> CLAIMS-MADE <input type="checkbox"/> OCCUR						MED EXP (Any one person) \$
							PERSONAL & ADV INJURY \$ <b>\$1,000,000</b>
							GENERAL AGGREGATE \$ <b>\$1,000,000</b>
	GEN'L AGGREGATE LIMIT APPLIES PER:						PRODUCTS - COMP/OP AGG \$ <b>\$1,000,000</b>
	<input type="checkbox"/> POLICY <input type="checkbox"/> PRO-JECT <input type="checkbox"/> LOC						\$
	<b>AUTOMOBILE LIABILITY</b>						COMBINED SINGLE LIMIT (Ea accident) \$ <b>\$1,000,000</b>
	<input type="checkbox"/> ANY AUTO						BODILY INJURY (Per person) \$
	<input type="checkbox"/> ALL OWNED AUTOS	<input type="checkbox"/> SCHEDULED AUTOS					BODILY INJURY (Per accident) \$
	<input type="checkbox"/> HIRED AUTOS	<input type="checkbox"/> NON-OWNED AUTOS					PROPERTY DAMAGE (Per accident) \$
							\$
	<b>UMBRELLA LIAB</b>						EACH OCCURRENCE \$ <b>\$1,000,000</b>
	<input type="checkbox"/> EXCESS LIAB	<input type="checkbox"/> OCCUR					AGGREGATE \$ <b>\$1,000,000</b>
	<input type="checkbox"/> DED <input type="checkbox"/> RETENTION \$	<input type="checkbox"/> CLAIMS-MADE					\$
	<b>WORKERS COMPENSATION AND EMPLOYERS' LIABILITY</b>						WC STATUTORY LIMITS <input type="checkbox"/> OTH-ER <input type="checkbox"/>
	ANY PROPRIETOR/PARTNER/EXECUTIVE OFFICER/MEMBER EXCLUDED? (Mandatory in NH)	<input type="checkbox"/> Y / <input type="checkbox"/> N	<input type="checkbox"/> N / <input type="checkbox"/> A				E.L. EACH ACCIDENT \$ <b>\$500,000</b>
	If yes, describe under DESCRIPTION OF OPERATIONS below						E.L. DISEASE - EA EMPLOYEE \$ <b>\$500,000</b>
	Professional Liability and Errors and Omissions: Owners/Contractors Protection XCU Coverage Included with General Liability Pollution/Environmental Liability						E.L. DISEASE - POLICY LIMIT \$ <b>\$500,000</b>
							<b>\$5,000,000</b>

DESCRIPTION OF OPERATIONS / LOCATIONS / VEHICLES (Attach ACORD 101, Additional Remarks Schedule, if more space is required)

Bid/Project Name or Contract Name and #  
Contractor  
Contact  
Address  
Phone #, Email Address, Fax #

- The City of Wheaton is an additional insured on a primary and non-contributory basis on all insurance policies with respect to Liability.
- Endorsements and a Waiver of Subrogation shall be provided for all policies with each updated certificate.
- Contractors: It shall be the responsibility of the contractor to insure that all subcontractors comply with the same insurance requirements.

**CERTIFICATE HOLDER****CANCELLATION**

City of Wheaton 303 West Wesley Street PO Box 727 Wheaton, IL 60187-0727  Attn: Procurement Officer (fax) 630-260-2017	SHOULD ANY OF THE ABOVE DESCRIBED POLICIES BE CANCELLED BEFORE THE EXPIRATION DATE THEREOF, NOTICE WILL BE DELIVERED IN ACCORDANCE WITH THE POLICY PROVISIONS.
	AUTHORIZED REPRESENTATIVE

© 1988-2010 ACORD CORPORATION. All rights reserved.

**Special Provisions for:  
Wages of Employees on Public Works**

This contract may be subject to the "Prevailing Wage Act," 820 ILCS 130/1 et seq ("The Act"). It shall be the responsibility of the contractor to determine whether the Act is applicable and if so to comply with all its terms and conditions. Any contractor having a question as to whether the Act is applicable shall consult with their own attorney to ascertain applicability. The City shall not have any duty to inform the contractor of the Acts applicability. If however the City informs the contractor that the Act is applicable it shall be the contractor's obligation to comply with all its terms and conditions unless the contractor can establish to the satisfaction of the City that the Act is inapplicable. If it is determined that The Act applies to this contract, all contractors and subcontractors subject to its terms shall comply with all of its provisions, including, but not limited to the following:

1. Not less than the prevailing rate of wages as found by the City of Wheaton or Department of Labor or determined by a court on review shall be paid to all laborers, workers and mechanics performing work under this contract. These prevailing rates of wages are included in this contract.
2. In all contractors' bonds the contractor shall include a provision that will guarantee the faithful performance of the prevailing wage clause provided by this contract.
3. If the Department of Labor revises the prevailing rate of hourly wages to be paid by the public body, the revised rate shall apply to the contractor, and the public body shall be responsible to notify the contractor and each subcontractor, of the revised rate.
4. The contractor and each subcontractor shall:
  - a. make and keep, for a period of not less than 3 years, records of all laborers, mechanics, and other workers employed by them on the project; the records shall include each worker's name, address, telephone number when available, social security number, classification or classifications, the hourly wages paid in each pay period, the number of hours worked each day, and the starting and ending times of work each day; and
  - b. submit monthly, in person, by mail, or electronically a certified payroll to the public body in charge of the project. The certified payroll shall consist of a complete copy of the records identified in paragraph (1) of this subsection (a). The certified payroll shall be accompanied by a statement signed by the contractor or subcontractor which avers that:
    - i. such records are true and accurate;
    - ii. the hourly rate paid to each worker is not less than the general prevailing rate of hourly wages required by this Act; and
    - iii. the contractor or subcontractor is aware that filing a certified payroll that he or she knows to be false is a Class B misdemeanor.
5. Upon 2 business days' notice, the contractor and each subcontractor shall make available for inspection the records identified in paragraph 4 to the City of Wheaton, its officers and agents, and to the Director of Labor and his deputies and agents during reasonable hours at a location within this State.

# Du Page County Prevailing Wage for July 2015

(See explanation of column headings at bottom of wages)

Trade Name	RG	TYP	C	Base	FRMAN	M-F>8	OSA	OSH	H/W	Pensn	Vac	Trng
=====	==	===	=	=====	=====	=====	===	===	=====	=====	=====	=====
ASBESTOS ABT-GEN		ALL		39.400	39.950	1.5	1.5	2.0	13.98	10.72	0.000	0.500
ASBESTOS ABT-MEC		BLD		36.340	38.840	1.5	1.5	2.0	11.47	10.96	0.000	0.720
BOILERMAKER		BLD		47.070	51.300	2.0	2.0	2.0	6.970	18.13	0.000	0.400
BRICK MASON		BLD		43.780	48.160	1.5	1.5	2.0	10.05	14.43	0.000	1.030
CARPENTER		ALL		44.350	46.350	1.5	1.5	2.0	13.29	16.39	0.000	0.630
CEMENT MASON		ALL		43.750	45.750	2.0	1.5	2.0	13.05	14.45	0.000	0.480
CERAMIC TILE FNSHER		BLD		36.810	0.000	1.5	1.5	2.0	10.55	9.230	0.000	0.770
COMMUNICATION TECH		BLD		32.650	34.750	1.5	1.5	2.0	9.550	15.16	1.250	0.610
ELECTRIC PWR EQMT OP		ALL		37.890	51.480	1.5	1.5	2.0	5.000	11.75	0.000	0.380
ELECTRIC PWR EQMT OP		HWY		39.220	53.290	1.5	1.5	2.0	5.000	12.17	0.000	0.390
ELECTRIC PWR GRNDMAN		ALL		29.300	51.480	1.5	1.5	2.0	5.000	9.090	0.000	0.290
ELECTRIC PWR GRNDMAN		HWY		30.330	53.290	1.5	1.5	2.0	5.000	9.400	0.000	0.300
ELECTRIC PWR LINEMAN		ALL		45.360	51.480	1.5	1.5	2.0	5.000	14.06	0.000	0.450
ELECTRIC PWR LINEMAN		HWY		46.950	53.290	1.5	1.5	2.0	5.000	14.56	0.000	0.470
ELECTRIC PWR TRK DRV		ALL		30.340	51.480	1.5	1.5	2.0	5.000	9.400	0.000	0.300
ELECTRIC PWR TRK DRV		HWY		31.400	53.290	1.5	1.5	2.0	5.000	9.730	0.000	0.310
ELECTRICIAN		BLD		38.160	41.980	1.5	1.5	2.0	9.550	18.29	4.680	0.680
ELEVATOR CONSTRUCTOR		BLD		50.800	57.150	2.0	2.0	2.0	13.57	14.21	4.060	0.600
FENCE ERECTOR	NE	ALL		37.340	39.340	1.5	1.5	2.0	13.05	12.06	0.000	0.300
FENCE ERECTOR	W	ALL		45.060	48.660	2.0	2.0	2.0	10.52	20.76	0.000	0.700
GLAZIER		BLD		40.500	42.000	1.5	2.0	2.0	13.14	16.99	0.000	0.940
HT/FROST INSULATOR		BLD		48.450	50.950	1.5	1.5	2.0	11.47	12.16	0.000	0.720
IRON WORKER	E	ALL		44.200	46.200	2.0	2.0	2.0	13.65	21.14	0.000	0.350
IRON WORKER	W	ALL		45.060	48.660	2.0	2.0	2.0	10.52	20.76	0.000	0.700
LABORER		ALL		39.200	39.950	1.5	1.5	2.0	13.98	10.72	0.000	0.500
LATHER		ALL		44.350	46.350	1.5	1.5	2.0	13.29	16.39	0.000	0.630
MACHINIST		BLD		45.350	47.850	1.5	1.5	2.0	7.260	8.950	1.850	0.000
MARBLE FINISHERS		ALL		31.400	32.970	1.5	1.5	2.0	9.850	13.10	0.000	0.600
MARBLE MASON		BLD		43.030	47.330	1.5	1.5	2.0	10.05	14.10	0.000	0.780
MATERIAL TESTER I		ALL		29.200	0.000	1.5	1.5	2.0	13.98	10.72	0.000	0.500
MATERIALS TESTER II		ALL		34.200	0.000	1.5	1.5	2.0	13.98	10.72	0.000	0.500
MILLWRIGHT		ALL		44.350	46.350	1.5	1.5	2.0	13.29	16.39	0.000	0.630
OPERATING ENGINEER		BLD	1	48.100	52.100	2.0	2.0	2.0	17.55	12.65	1.900	1.250
OPERATING ENGINEER		BLD	2	46.800	52.100	2.0	2.0	2.0	17.55	12.65	1.900	1.250
OPERATING ENGINEER		BLD	3	44.250	52.100	2.0	2.0	2.0	17.55	12.65	1.900	1.250
OPERATING ENGINEER		BLD	4	42.500	52.100	2.0	2.0	2.0	17.55	12.65	1.900	1.250
OPERATING ENGINEER		BLD	5	51.850	52.100	2.0	2.0	2.0	17.55	12.65	1.900	1.250
OPERATING ENGINEER		BLD	6	49.100	52.100	2.0	2.0	2.0	17.55	12.65	1.900	1.250
OPERATING ENGINEER		BLD	7	51.100	52.100	2.0	2.0	2.0	17.55	12.65	1.900	1.250
OPERATING ENGINEER		FLT		36.000	36.000	1.5	1.5	2.0	17.10	11.80	1.900	1.250
OPERATING ENGINEER		HWY	1	46.300	50.300	1.5	1.5	2.0	17.55	12.65	1.900	1.250
OPERATING ENGINEER		HWY	2	45.750	50.300	1.5	1.5	2.0	17.55	12.65	1.900	1.250
OPERATING ENGINEER		HWY	3	43.700	50.300	1.5	1.5	2.0	17.55	12.65	1.900	1.250
OPERATING ENGINEER		HWY	4	42.300	50.300	1.5	1.5	2.0	17.55	12.65	1.900	1.250
OPERATING ENGINEER		HWY	5	41.100	50.300	1.5	1.5	2.0	17.55	12.65	1.900	1.250
OPERATING ENGINEER		HWY	6	49.300	50.300	1.5	1.5	2.0	17.55	12.65	1.900	1.250
OPERATING ENGINEER		HWY	7	47.300	50.300	1.5	1.5	2.0	17.55	12.65	1.900	1.250
ORNAMNTL IRON WORKER E		ALL		45.000	47.500	2.0	2.0	2.0	13.55	17.94	0.000	0.650
ORNAMNTL IRON WORKER W		ALL		45.060	48.660	2.0	2.0	2.0	10.52	20.76	0.000	0.700
PAINTER		ALL		41.730	43.730	1.5	1.5	1.5	10.30	8.200	0.000	1.350
PAINTER SIGNS		BLD		33.920	38.090	1.5	1.5	1.5	2.600	2.710	0.000	0.000
PILEDRIIVER		ALL		44.350	46.350	1.5	1.5	2.0	13.29	16.39	0.000	0.630
PIPEFITTER		BLD		46.000	49.000	1.5	1.5	2.0	9.000	15.85	0.000	1.780
PLASTERER		BLD		41.250	43.760	1.5	1.5	2.0	9.700	13.08	0.000	0.980
PLUMBER		BLD		46.650	48.650	1.5	1.5	2.0	13.18	11.46	0.000	0.880
ROOFER		BLD		41.000	44.000	1.5	1.5	2.0	8.280	10.54	0.000	0.530

SHEETMETAL WORKER		BLD	44.720	46.720	1.5	1.5	2.0	10.65	13.31	0.000	0.820
SPRINKLER FITTER		BLD	49.200	51.200	1.5	1.5	2.0	11.75	9.650	0.000	0.550
STEEL ERECTOR	E	ALL	42.070	44.070	2.0	2.0	2.0	13.45	19.59	0.000	0.350
STEEL ERECTOR	W	ALL	45.060	48.660	2.0	2.0	2.0	10.52	20.76	0.000	0.700
STONE MASON		BLD	43.780	48.160	1.5	1.5	2.0	10.05	14.43	0.000	1.030
<del>SURVEY WORKER</del>	->	NOT IN EFFECT	ALL	37.000	37.750	1.5	1.5	2.0	12.97	9.930	0.000
0.000	0.500										
TERRAZZO FINISHER		BLD	38.040	0.000	1.5	1.5	2.0	10.55	11.22	0.000	0.720
TERRAZZO MASON		BLD	41.880	44.880	1.5	1.5	2.0	10.55	12.51	0.000	0.940
TILE MASON		BLD	42.840	46.840	1.5	1.5	2.0	10.55	10.42	0.000	0.920
TRAFFIC SAFETY WRKR		HWY	32.750	34.350	1.5	1.5	2.0	6.550	6.450	0.000	0.500
TRUCK DRIVER		ALL 1	35.920	36.120	1.5	1.5	2.0	8.280	8.760	0.000	0.150
TRUCK DRIVER		ALL 2	32.700	33.100	1.5	1.5	2.0	6.500	4.350	0.000	0.150
TRUCK DRIVER		ALL 3	32.900	33.100	1.5	1.5	2.0	6.500	4.350	0.000	0.150
TRUCK DRIVER		ALL 4	33.100	33.100	1.5	1.5	2.0	6.500	4.350	0.000	0.150
TUCKPOINTER		BLD	42.620	43.620	1.5	1.5	2.0	10.05	13.34	0.000	0.670

Legend: RG (Region)

TYP (Trade Type - All, Highway, Building, Floating, Oil & Chip, Rivers)

C (Class)

Base (Base Wage Rate)

FRMAN (Foreman Rate)

M-F>8 (OT required for any hour greater than 8 worked each day, Mon through Fri.)

OSA (Overtime (OT) is required for every hour worked on Saturday)

OSH (Overtime is required for every hour worked on Sunday and Holidays)

H/W (Health & Welfare Insurance)

Pensn (Pension)

Vac (Vacation)

Trng (Training)

## Explanations

DUPAGE COUNTY

IRON WORKERS AND FENCE ERECTOR (WEST) - West of Route 53.

The following list is considered as those days for which holiday rates of wages for work performed apply: New Years Day, Memorial Day, Fourth of July, Labor Day, Thanksgiving Day, Christmas Day and Veterans Day in some classifications/counties. Generally, any of these holidays which fall on a Sunday is celebrated on the following Monday. This then makes work performed on that Monday payable at the appropriate overtime rate for holiday pay. Common practice in a given local may alter certain days of celebration. If in doubt, please check with IDOL.

EXPLANATION OF CLASSES

ASBESTOS - GENERAL - removal of asbestos material/mold and hazardous materials from any place in a building, including mechanical systems where those mechanical systems are to be removed. This includes the removal of asbestos materials/mold and hazardous materials from ductwork or pipes in a building when the building is to be demolished at the time or at some close future date.

ASBESTOS - MECHANICAL - removal of asbestos material from mechanical systems, such as pipes, ducts, and boilers, where the mechanical systems are to remain.

TRAFFIC SAFETY - work associated with barricades, horses and drums used to reduce lane usage on highway work, the installation and removal of temporary lane markings, and the installation and removal of temporary road signs.

#### CERAMIC TILE FINISHER

The grouting, cleaning, and polishing of all classes of tile, whether for interior or exterior purposes, all burned, glazed or unglazed products; all composition materials, granite tiles, warning detectable tiles, cement tiles, epoxy composite materials, pavers, glass, mosaics, fiberglass, and all substitute materials, for tile made in tile-like units; all mixtures in tile like form of cement, metals, and other materials that are for and intended for use as a finished floor surface, stair treads, promenade roofs, walks, walls, ceilings, swimming pools, and all other places where tile is to form a finished interior or exterior. The mixing of all setting mortars including but not limited to thin-set mortars, epoxies, wall mud, and any other sand and cement mixtures or adhesives when used in the preparation, installation, repair, or maintenance of tile and/or similar materials. The handling and unloading of all sand, cement, lime, tile, fixtures, equipment, adhesives, or any other materials to be used in the preparation, installation, repair, or maintenance of tile and/or similar materials. Ceramic Tile Finishers shall fill all joints and voids regardless of method on all tile work, particularly and especially after installation of said tile work. Application of any and all protective coverings to all types of tile installations including, but not be limited to, all soap compounds, paper products, tapes, and all polyethylene coverings, plywood, masonite, cardboard, and any new type of products that may be used to protect tile installations, Blastrac equipment, and all floor scarifying equipment used in preparing floors to receive tile. The clean up and removal of all waste and materials. All demolition of existing tile floors and walls to be re-tiled.

#### COMMUNICATIONS TECHNICIAN

Low voltage installation, maintenance and removal of telecommunication facilities (voice, sound, data and video) including telephone and data inside wire, interconnect, terminal equipment, central offices, PABX, fiber optic cable and equipment, micro waves, V-SAT, bypass, CATV, WAN (wide area networks), LAN (local area networks), and ISDN (integrated system digital network), pulling of wire in raceways, but not the installation of raceways.

#### MARBLE FINISHER

Loading and unloading trucks, distribution of all materials (all stone, sand, etc.), stocking of floors with material, performing all rigging for heavy work, the handling of all material that may be needed for the installation of such materials, building of scaffolding, polishing if needed, patching, waxing of material if

damaged, pointing up, caulking, grouting and cleaning of marble, holding water on diamond or Carborundum blade or saw for setters cutting, use of tub saw or any other saw needed for preparation of material, drilling of holes for wires that anchor material set by setters, mixing up of molding plaster for installation of material, mixing up thin set for the installation of material, mixing up of sand to cement for the installation of material and such other work as may be required in helping a Marble Setter in the handling of all material in the erection or installation of interior marble, slate, travertine, art marble, serpentine, alberene stone, blue stone, granite and other stones (meaning as to stone any foreign or domestic materials as are specified and used in building interiors and exteriors and customarily known as stone in the trade), carrara, sanionyx, vitrolite and similar opaque glass and the laying of all marble tile, terrazzo tile, slate tile and precast tile, steps, risers treads, base, or any other materials that may be used as substitutes for any of the aforementioned materials and which are used on interior and exterior which are installed in a similar manner.

MATERIAL TESTER I: Hand coring and drilling for testing of materials; field inspection of uncured concrete and asphalt.

MATERIAL TESTER II: Field inspection of welds, structural steel, fireproofing, masonry, soil, facade, reinforcing steel, formwork, cured concrete, and concrete and asphalt batch plants; adjusting proportions of bituminous mixtures.

#### OPERATING ENGINEER - BUILDING

Class 1. Asphalt Plant; Asphalt Spreader; Autograde; Backhoes with Caisson Attachment; Batch Plant; Benoto (requires Two Engineers); Boiler and Throttle Valve; Caisson Rigs; Central Redi-Mix Plant; Combination Back Hoe Front End-loader Machine; Compressor and Throttle Valve; Concrete Breaker (Truck Mounted); Concrete Conveyor; Concrete Conveyor (Truck Mounted); Concrete Paver Over 27E cu. ft; Concrete Paver 27E cu. ft. and Under; Concrete Placer; Concrete Placing Boom; Concrete Pump (Truck Mounted); Concrete Tower; Cranes, All; Cranes, Hammerhead; Cranes, (GCI and similar Type); Creter Crane; Spider Crane; Crusher, Stone, etc.; Derricks, All; Derricks, Traveling; Formless Curb and Gutter Machine; Grader, Elevating; Grouting Machines; Heavy Duty Self-Propelled Transporter or Prime Mover; Highlift Shovels or Front Endloader 2-1/4 yd. and over; Hoists, Elevators, outside type rack and pinion and similar machines; Hoists, One, Two and Three Drum; Hoists, Two Tugger One Floor; Hydraulic Backhoes; Hydraulic Boom Trucks; Hydro Vac (and similar equipment); Locomotives, All; Motor Patrol; Lubrication Technician; Manipulators; Pile Drivers and Skid Rig; Post Hole Digger; Pre-Stress Machine; Pump Cretes Dual Ram; Pump Cretes: Squeeze Cretes-Screw Type Pumps; Gypsum Bulker and Pump; Raised and Blind Hole Drill; Roto Mill Grinder; Scoops - Tractor Drawn; Slip-Form Paver; Straddle Buggies; Operation of Tie Back Machine; Tournapull; Tractor with Boom and Side Boom; Trenching Machines.

Class 2. Boilers; Broom, All Power Propelled; Bulldozers; Concrete Mixer (Two Bag and Over); Conveyor, Portable; Forklift Trucks; Highlift Shovels or Front Endloaders under 2-1/4 yd.; Hoists, Automatic; Hoists, Inside Elevators; Hoists, Sewer Dragging Machine; Hoists, Tugger Single Drum; Laser Screed; Rock Drill (Self-Propelled); Rock Drill (Truck Mounted); Rollers, All; Steam Generators; Tractors, All; Tractor Drawn Vibratory Roller; Winch Trucks with "A" Frame.

Class 3. Air Compressor; Combination Small Equipment Operator; Generators; Heaters, Mechanical; Hoists, Inside Elevators (remodeling

or renovation work); Hydraulic Power Units (Pile Driving, Extracting, and Drilling); Pumps, over 3" (1 to 3 not to exceed a total of 300 ft.); Low Boys; Pumps, Well Points; Welding Machines (2 through 5); Winches, 4 Small Electric Drill Winches.

Class 4. Bobcats and/or other Skid Steer Loaders; Oilers; and Brick Forklift.

Class 5. Assistant Craft Foreman.

Class 6. Gradall.

Class 7. Mechanics; Welders.

#### OPERATING ENGINEERS - HIGHWAY CONSTRUCTION

Class 1. Asphalt Plant; Asphalt Heater and Planer Combination; Asphalt Heater Scarfire; Asphalt Spreader; Autograder/GOMACO or other similar type machines: ABG Paver; Backhoes with Caisson Attachment; Ballast Regulator; Belt Loader; Caisson Rigs; Car Dumper; Central Redi-Mix Plant; Combination Backhoe Front Endloader Machine, (1 cu. yd. Backhoe Bucket or over or with attachments); Concrete Breaker (Truck Mounted); Concrete Conveyor; Concrete Paver over 27E cu. ft.; Concrete Placer; Concrete Tube Float; Cranes, all attachments; Cranes, Tower Cranes of all types: Creter Crane: Spider Crane; Crusher, Stone, etc.; Derricks, All; Derrick Boats; Derricks, Traveling; Dredges; Elevators, Outside type Rack & Pinion and Similar Machines; Formless Curb and Gutter Machine; Grader, Elevating; Grader, Motor Grader, Motor Patrol, Auto Patrol, Form Grader, Pull Grader, Subgrader; Guard Rail Post Driver Truck Mounted; Hoists, One, Two and Three Drum; Heavy Duty Self-Propelled Transporter or Prime Mover; Hydraulic Backhoes; Backhoes with shear attachments up to 40' of boom reach; Lubrication Technician; Manipulators; Mucking Machine; Pile Drivers and Skid Rig; Pre-Stress Machine; Pump Cretes Dual Ram; Rock Drill - Crawler or Skid Rig; Rock Drill - Truck Mounted; Rock/Track Tamper; Roto Mill Grinder; Slip-Form Paver; Snow Melters; Soil Test Drill Rig (Truck Mounted); Straddle Buggies; Hydraulic Telescoping Form (Tunnel); Operation of Tieback Machine; Tractor Drawn Belt Loader; Tractor Drawn Belt Loader (with attached pusher - two engineers); Tractor with Boom; Tractaire with Attachments; Traffic Barrier Transfer Machine; Trenching; Truck Mounted Concrete Pump with Boom; Raised or Blind Hole Drills (Tunnel Shaft); Underground Boring and/or Mining Machines 5 ft. in diameter and over tunnel, etc; Underground Boring and/or Mining Machines under 5 ft. in diameter; Wheel Excavator; Widener (APSCO).

Class 2. Batch Plant; Bituminous Mixer; Boiler and Throttle Valve; Bulldozers; Car Loader Trailing Conveyors; Combination Backhoe Front Endloader Machine (Less than 1 cu. yd. Backhoe Bucket or over or with attachments); Compressor and Throttle Valve; Compressor, Common Receiver (3); Concrete Breaker or Hydro Hammer; Concrete Grinding Machine; Concrete Mixer or Paver 7S Series to and including 27 cu. ft.; Concrete Spreader; Concrete Curing Machine, Burlap Machine, Belting Machine and Sealing Machine; Concrete Wheel Saw; Conveyor Muck Cars (Haglund or Similar Type); Drills, All; Finishing Machine - Concrete; Highlift Shovels or Front Endloader; Hoist - Sewer Dragging Machine; Hydraulic Boom Trucks (All Attachments); Hydro-Blaster; Hydro Excavating (excluding hose work); Laser Screed; All Locomotives, Dinky; Off-Road Hauling Units (including articulating) Non Self-Loading Ejection Dump; Pump Cretes: Squeeze Cretes - Screw Type Pumps, Gypsum Bulker and Pump; Roller, Asphalt; Rotary Snow Plows; Rototiller, Seaman, etc., self-propelled; Self-Propelled Compactor; Spreader - Chip - Stone, etc.; Scraper - Single/Twin Engine/Push and

Pull; Scraper - Prime Mover in Tandem (Regardless of Size); Tractors pulling attachments, Sheeps Foot, Disc, Compactor, etc.; Tug Boats.

Class 3. Boilers; Brooms, All Power Propelled; Cement Supply Tender; Compressor, Common Receiver (2); Concrete Mixer (Two Bag and Over); Conveyor, Portable; Farm-Type Tractors Used for Mowing, Seeding, etc.; Forklift Trucks; Grouting Machine; Hoists, Automatic; Hoists, All Elevators; Hoists, Tugger Single Drum; Jeep Diggers; Low Boys; Pipe Jacking Machines; Post-Hole Digger; Power Saw, Concrete Power Driven; Pug Mills; Rollers, other than Asphalt; Seed and Straw Blower; Steam Generators; Stump Machine; Winch Trucks with "A" Frame; Work Boats; Tamper-Form-Motor Driven.

Class 4. Air Compressor; Combination - Small Equipment Operator; Directional Boring Machine; Generators; Heaters, Mechanical; Hydraulic Power Unit (Pile Driving, Extracting, or Drilling); Light Plants, All (1 through 5); Pumps, over 3" (1 to 3 not to exceed a total of 300 ft.); Pumps, Well Points; Vacuum Trucks (excluding hose work); Welding Machines (2 through 5); Winches, 4 Small Electric Drill Winches.

Class 5. SkidSteer Loader (all); Brick Forklifts; Oilers.

Class 6. Field Mechanics and Field Welders

Class 7. Dowell Machine with Air Compressor; Gradall and machines of like nature.

#### OPERATING ENGINEER - FLOATING

Diver. Diver Wet Tender, Diver Tender, ROV Pilot, ROV Tender

SURVEY WORKER - Operated survey equipment including data collectors, G.P.S. and robotic instruments, as well as conventional levels and transits.

#### TRUCK DRIVER - BUILDING, HEAVY AND HIGHWAY CONSTRUCTION

Class 1. Two or three Axle Trucks. A-frame Truck when used for transportation purposes; Air Compressors and Welding Machines, including those pulled by cars, pick-up trucks and tractors; Ambulances; Batch Gate Lockers; Batch Hopperman; Car and Truck Washers; Carry-alls; Fork Lifts and Hoisters; Helpers; Mechanics Helpers and Greasers; Oil Distributors 2-man operation; Pavement Breakers; Pole Trailer, up to 40 feet; Power Mower Tractors; Self-propelled Chip Spreader; Skipman; Slurry Trucks, 2-man operation; Slurry Truck Conveyor Operation, 2 or 3 man; Teamsters; Unskilled Dumpman; and Truck Drivers hauling warning lights, barricades, and portable toilets on the job site.

Class 2. Four axle trucks; Dump Crets and Adgetors under 7 yards; Dumpsters, Track Trucks, Euclids, Hug Bottom Dump Turnapulls or Turnatrailers when pulling other than self-loading equipment or similar equipment under 16 cubic yards; Mixer Trucks under 7 yards; Ready-mix Plant Hopper Operator, and Winch Trucks, 2 Axles.

Class 3. Five axle trucks; Dump Crets and Adgetors 7 yards and over; Dumpsters, Track Trucks, Euclids, Hug Bottom Dump Turnatrailers or turnapulls when pulling other than self-loading equipment or similar equipment over 16 cubic yards; Explosives and/or Fission Material Trucks; Mixer Trucks 7 yards or over; Mobile Cranes while in transit; Oil Distributors, 1-man operation; Pole Trailer, over 40 feet; Pole and Expandable Trailers hauling material over 50 feet long; Slurry trucks, 1-man operation; Winch trucks, 3 axles or more;

Mechanic--Truck Welder and Truck Painter.

Class 4. Six axle trucks; Dual-purpose vehicles, such as mounted crane trucks with hoist and accessories; Foreman; Master Mechanic; Self-loading equipment like P.B. and trucks with scoops on the front.

#### TERRAZZO FINISHER

The handling of sand, cement, marble chips, and all other materials that may be used by the Mosaic Terrazzo Mechanic, and the mixing, grinding, grouting, cleaning and sealing of all Marble, Mosaic, and Terrazzo work, floors, base, stairs, and wainscoting by hand or machine, and in addition, assisting and aiding Marble, Masonic, and Terrazzo Mechanics.

#### Other Classifications of Work:

For definitions of classifications not otherwise set out, the Department generally has on file such definitions which are available. If a task to be performed is not subject to one of the classifications of pay set out, the Department will upon being contacted state which neighboring county has such a classification and provide such rate, such rate being deemed to exist by reference in this document. If no neighboring county rate applies to the task, the Department shall undertake a special determination, such special determination being then deemed to have existed under this determination. If a project requires these, or any classification not listed, please contact IDOL at 217-782-1710 for wage rates or clarifications.

#### LANDSCAPING

Landscaping work falls under the existing classifications for laborer, operating engineer and truck driver. The work performed by landscape plantsman and landscape laborer is covered by the existing classification of laborer. The work performed by landscape operators (regardless of equipment used or its size) is covered by the classifications of operating engineer. The work performed by landscape truck drivers (regardless of size of truck driven) is covered by the classifications of truck driver.

#### MATERIAL TESTER & MATERIAL TESTER/INSPECTOR I AND II

Notwithstanding the difference in the classification title, the classification entitled "Material Tester I" involves the same job duties as the classification entitled "Material Tester/Inspector I". Likewise, the classification entitled "Material Tester II" involves the same job duties as the classification entitled "Material Tester/Inspector II".

Agreement Between the City of Wheaton, IL  
and \_\_\_\_\_

## LED LIGHTING INSTALLATION

### Change Order # \_\_\_\_\_

#### **Change Order required due to:**

- ☐ Changed/Unforeseen Condition  
☐ Change in Scope  
☐ Errors and Omissions  
☐ Other: \_\_\_\_\_

#### **Type of Change Order:**

- ☐ Fixed Cost of \$ \_\_\_\_\_  
☐ Time & Materials, not to exceed: \$ \_\_\_\_\_  
☐ Emergency Change, not to exceed \$ \_\_\_\_\_  
☐ Extension of Completion Date

Attached is: ☐ Service Providers Proposal; ☐ Description of Change

### Cost and Schedule Control Summary

*If this section is left blank, Change Order will not result in additional charges:*

Original Contract Amount \$ \_\_\_\_\_  
Previous COs Adds/Deducts \$ \_\_\_\_\_  
This CO Add/Deduct \$ \_\_\_\_\_  
Revised Contract Amount \$ \_\_\_\_\_

*If this section is left blank, Change Order will not result in additional time to complete the project:*

Original Contract Duration \_\_\_\_\_ days  
Previous COs Add/Deduct \_\_\_\_\_ days  
This CO Add/Deduct \_\_\_\_\_ days  
Revised Contract Duration \_\_\_\_\_ days  
Revised Contract Completion Date \_\_\_\_\_

The compensation (time and cost set forth in this Change Order comprises the total compensation due the Service Provider, all subcontractors, and all suppliers, for the work or change defined in this Change Order, including impact on the unchanged work. By signing the Change Order, the Service Provider acknowledges and agrees on behalf of himself, all subcontractors, and all suppliers, that the stipulated compensation includes payment for all work contained in the Change Order, plus all payment interruptions of schedules, extended field overhead costs, delay, and all impact, ripple effect or cumulative impact on all other work under this contract. The signing of the Change Order indicates that the Change Order constitutes full mutual accord and satisfaction of subcontractors, and all suppliers, as a result of the change. The Service Provider on behalf of himself, all subcontractors and all suppliers, agrees to waive all rights, without exception or reservation of any whatsoever to file any further claim related to the Change Order. No further claim or request for equitable adjustment of any type shall rise out of or as a result of this Change Order or the impact of this Change Order on the remainder of the work under this Contract.

All terms and Conditions of the original contract apply to this Change Order and remain the same and in full force and effect.

Project Manager: \_\_\_\_\_ Date: \_\_\_\_\_ Department Head: \_\_\_\_\_ Date: \_\_\_\_\_

Finance: \_\_\_\_\_ Date: \_\_\_\_\_ City Manager: \_\_\_\_\_ Date: \_\_\_\_\_

Service Provider: \_\_\_\_\_ Date: \_\_\_\_\_

**Upon approval, forward this document to Procurement for Amendment of Contract.**